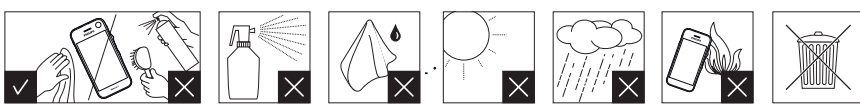
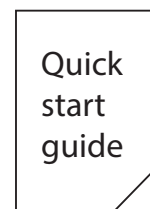
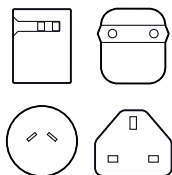
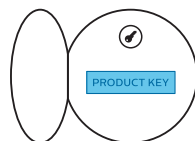
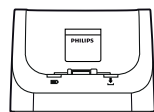




User manual
www.speechair.com/support



(PSP2200)



© 2018 Speech Processing Solutions GmbH. All rights reserved.
Specifications are subject to change without notice. Philips and the Philips shield emblem are registered trademarks of Koninklijke Philips N.V. and are used under license.



Protect your investment

Protégez votre investissement
Schützen Sie Ihre Investition



Absorbs shock from accidental drops

Protection contre les chutes
Schützt sicher bei möglichen Stürzen



Convenient carrying clip

Attache pratique pour le transport
Praktischer Trageclip



Antimicrobial surface

Revêtement antimicrobien
Antimikrobielle Oberfläche



Noise-resistant polished surface

Surface polie prévenant contre les bruits parasites
Polierte Oberfläche gegen Griffgeräusche



SpeechAir case
ACC1120

Learn more | En savoir plus | Mehr erfahren:
www.philips.com/dictation



PHILIPS

SpeechAir

Smart Voice Recorder

PSP2000 series

Quick start guide

Find a detailed user manual at
www.speechair.com/support.

DE Kurzanleitung

Eine ausführliche Bedienungsanleitung finden Sie unter www.speechair.com/support.

ES Guía de inicio rápido

Encontrará un manual de usuario detallado en www.speechair.com/support.

FR Guide de démarrage rapide

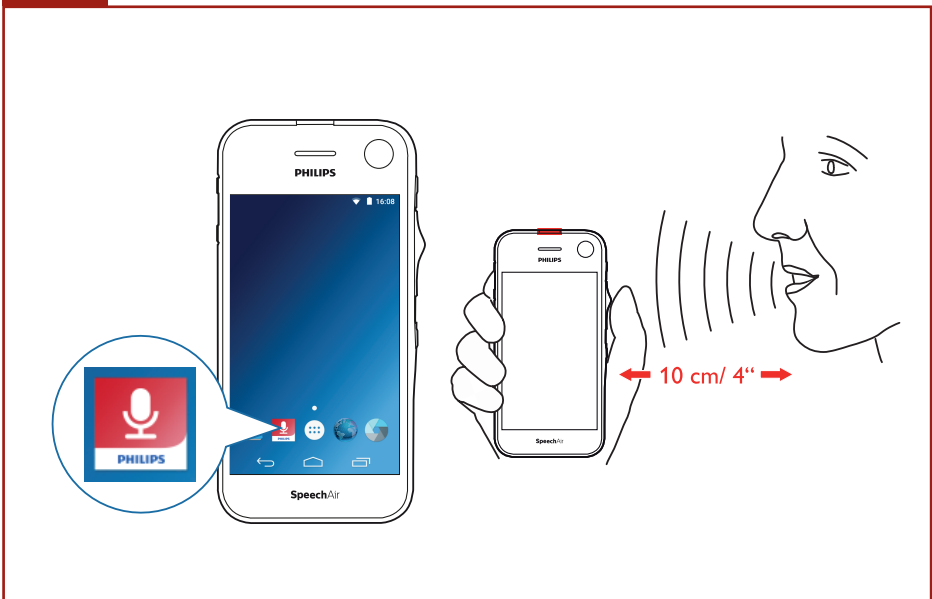
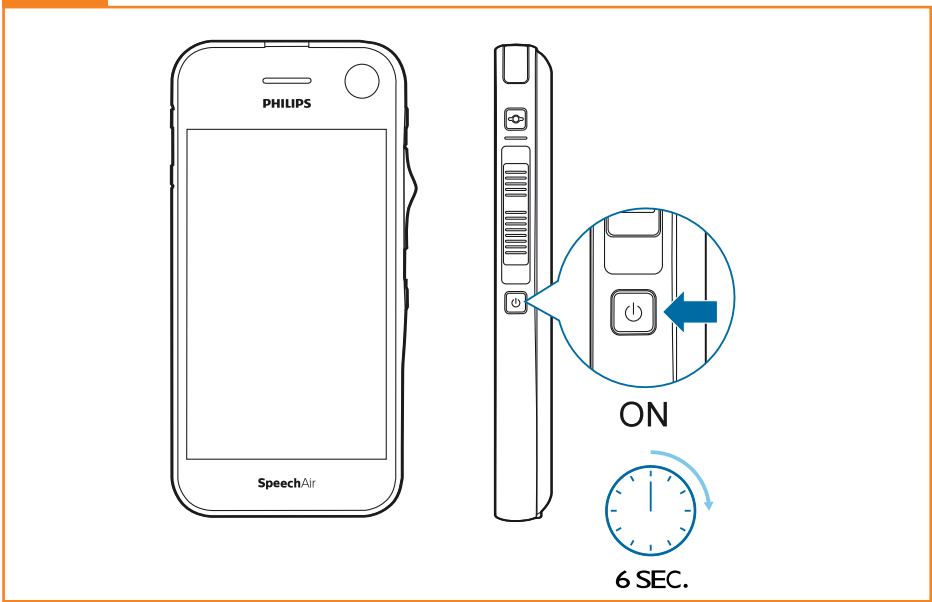
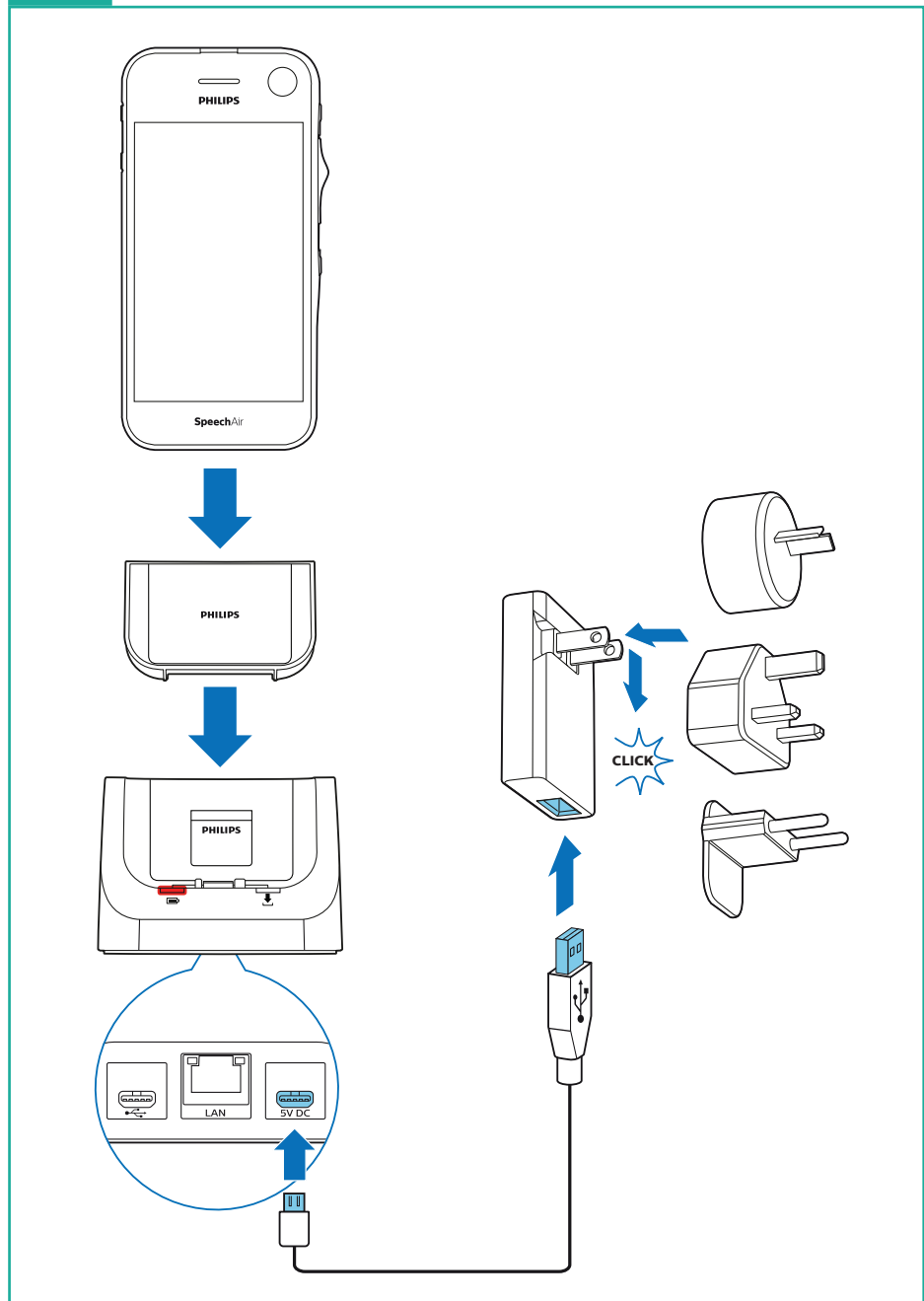
Un manuel d'utilisation détaillé est disponible sur www.speechair.com/support.

NL Snelle startgids

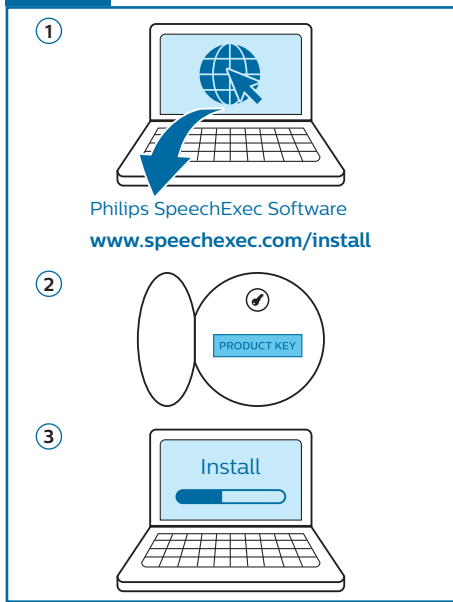
Een gedetailleerde gebruikershandleiding bevindt zich op www.speechair.com/support.



Register your product and get support at
www.philips.com/dictation



(PSP2200)



(PSP2200)

