

# Administrator's guide for SpeechExec Enterprise web access 6.0

## Table of Contents

Change history .....	2
1 Requirements.....	3
2 How to define the location of SEERoot and license server in the IIS web.config file .....	3
2.1 During installation.....	3
2.2 Modifying the SEERoot and license server manually after installation .....	3
3 Configuring the web service .....	5
3.1 How to set up automatic startup for the web service.....	5
3.2 How to change the user identity for the application pool.....	7
3.3 How to activate Windows Authentication for the site .....	9
3.4 Optional: Using HTTPS for SEWeb .....	10
3.4.1 Configuration in IIS.....	11
4 Web.config settings .....	11
5 Troubleshooting.....	13
5.1 Logging .....	13
5.2 How to set up the application pool of the web service .....	14
5.3 How to create a new application pool.....	15

## Change history

Document version	Application version	Description
1.0	SEE 6.0	Initial document

## 1 Requirements

SpeechLive service has the following software requirements:

**Warning:** Please read the full list of requirements before you start.

<b>Operating system</b>	Windows Server 2016	
<b>IIS</b>	IIS 7 or later	Make sure that IIS is turned on before installing .NET Framework in order to have a properly installed ASP.NET
<b>Microsoft .NET Framework</b>	Microsoft .NET Framework 4.6.1 or later	

### Role and Feature requirements

(the example below uses Windows Server 2016 – Add Roles and Features Wizard):

Roles tab:

- Web Server (IIS) [IIS 7 or later]
  - Common HTTP Features
    - HTTP Errors
    - Static content
    - HTTP Redirection
  - Security
    - Windows Authentication
  - Application Development
    - .NET Extensibility 4.x
    - ASP .NET 4.x

Although the installer of SpeechExec Enterprise web access installs the web service into IIS, it is the task of the administrator to properly set up IIS.

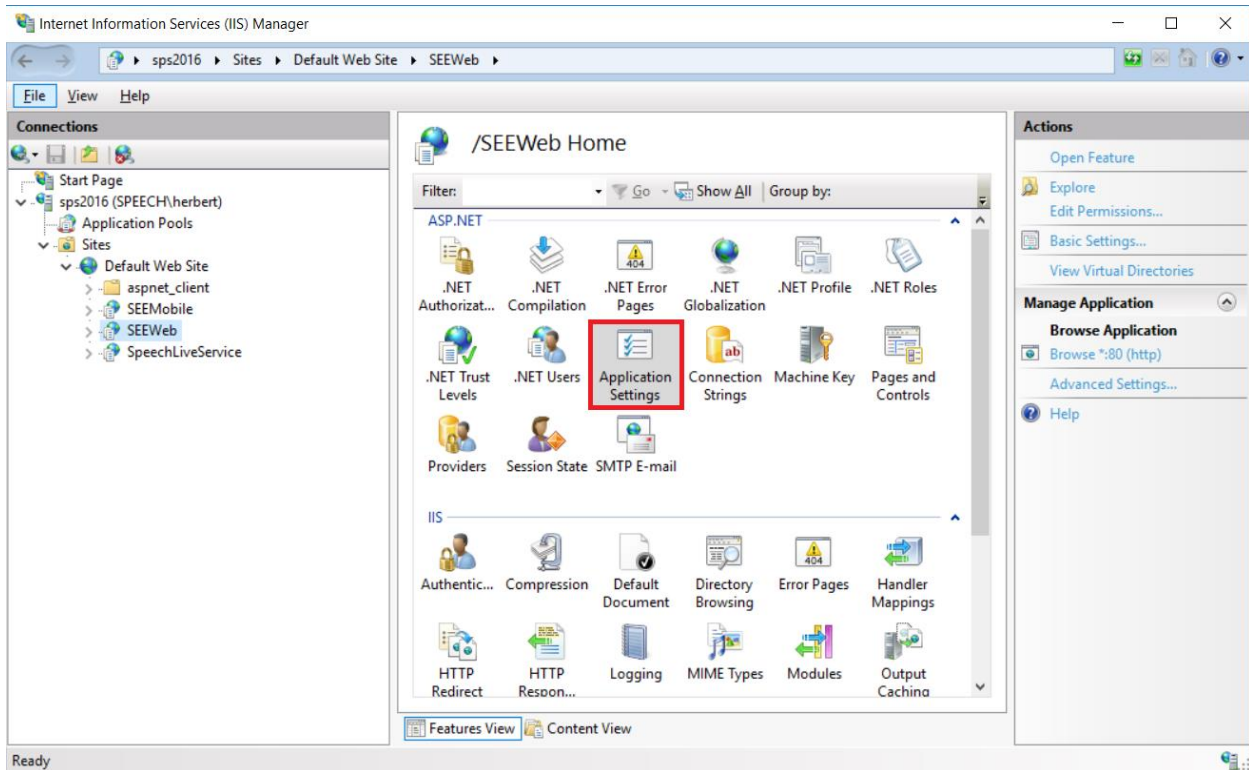
## 2 How to define the location of SEERoot and license server in the IIS web.config file

### 2.1 During installation

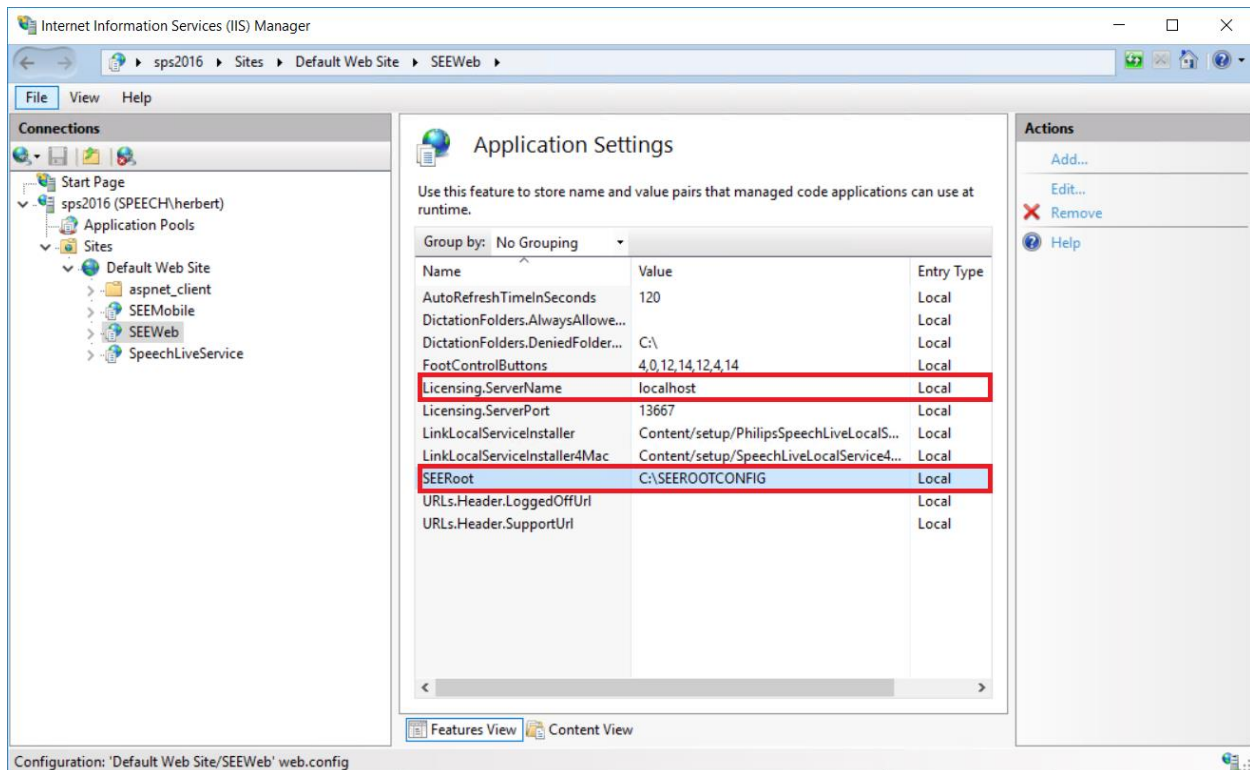
During installation the SEERoot configuration folder and license server address must be defined and cannot be modified by the installer later, only manual modification is supported.

### 2.2 Modifying the SEERoot and license server manually after installation

If you want to change the path of the SEERoot configuration folder and license server address after the installation, open the IIS Manager, select the **SEERoot** node and double click **Application Settings**:



Double click “SEERoot” or “Licensing.ServerName” to change the according values:



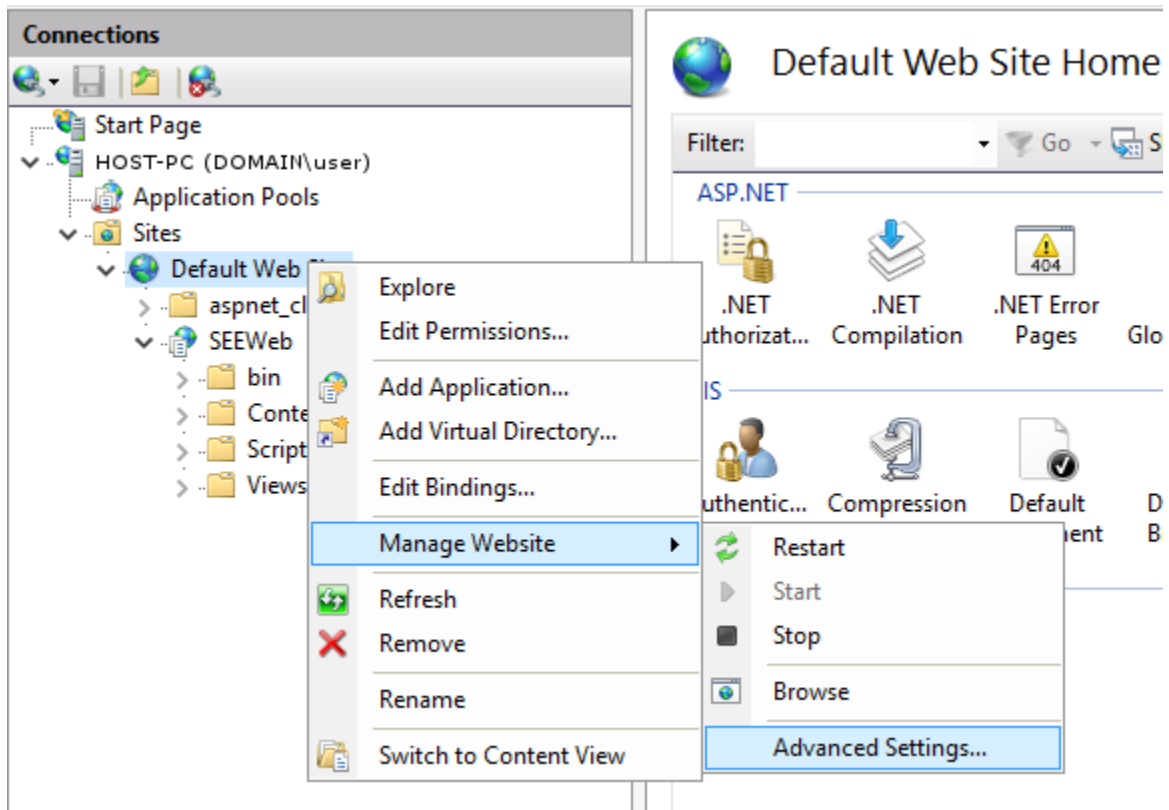
### 3 Configuring the web service

#### 3.1 How to set up automatic startup for the web service

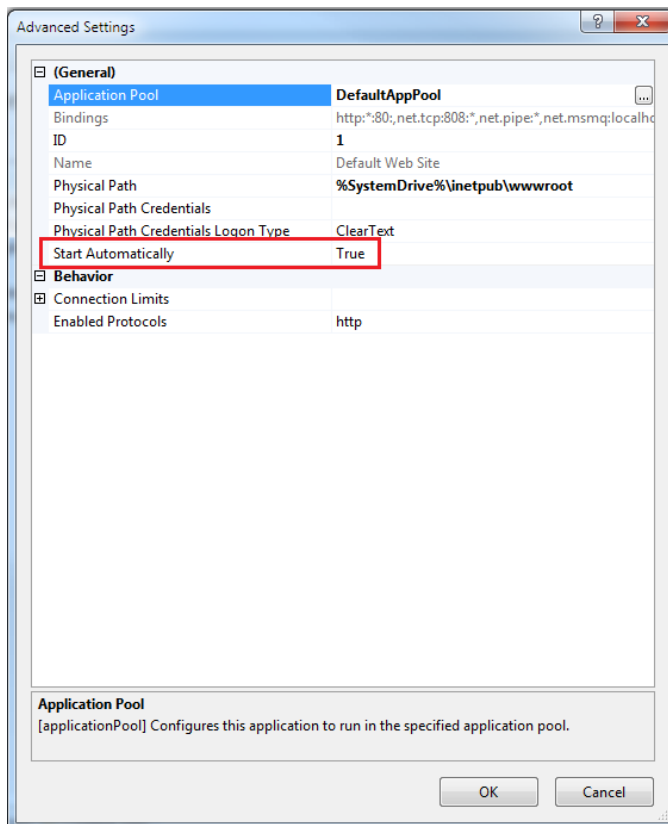
To set up the web service to start automatically, do the following:

##### **Older IIS versions (earlier than version 8):**

1. Right-click **Default Web Site** and select **Manage Web Site > Advanced settings...**



## 2. Set Start Automatically to True.



**Newer IIS versions (8 or later):**

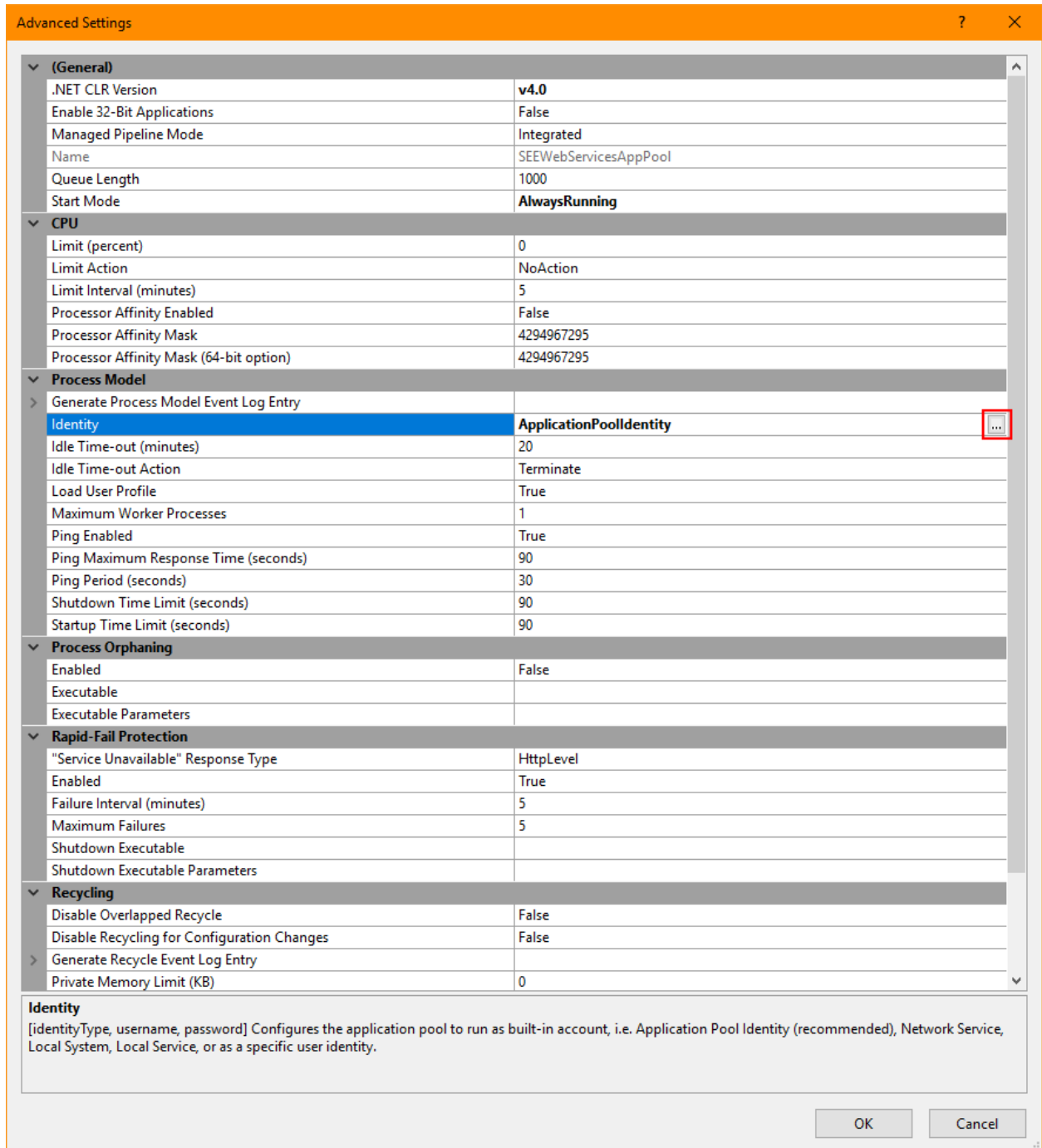
1. In IIS Manager, click on the computer name on the **Connection** pane.
2. Switch to **Features View** if the view is not active.
3. Double-click **Configuration Editor** in the **Management** section of the **Features View**.
4. Click the down-arrow next to the **Section** field, expand system.applicationHost, and then click **applicationPools**.
5. Click **(Collection)** and then click **Browse (...)** next to the field that shows the count.
6. In the **Collection Editor**, select the application pool for which you want to configure the startMode attribute.
7. In the **Properties** window at the bottom, set the following values:
  - autoStart attribute to **true**
  - startMode attribute to **AlwaysRunning**

### 3.2 [How to change the user identity for the application pool](#)

A user with appropriate rights to access “SEERoot” and the all of the configured dictation folders for users is required to be used as an AppPoolIdentity user.

To change the user identity for the new application pool, follow the instruction below:

1. On the **Application Pools** panel in IIS, right-click the newly created **SEEWebServicesAppPool** and select **Advanced Settings...**
2. In the **Advanced Settings** dialog, select **Identity** and click **Browse (...)**.



Advanced Settings

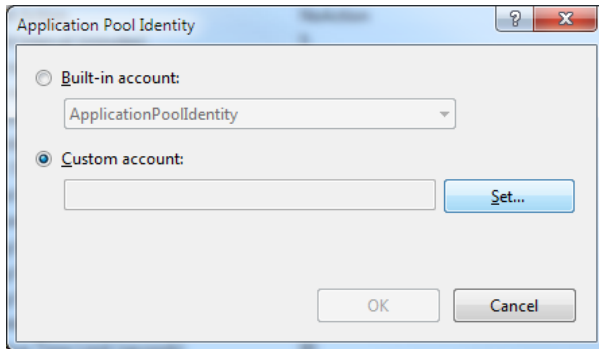
<b>(General)</b>	
.NET CLR Version	v4.0
Enable 32-Bit Applications	False
Managed Pipeline Mode	Integrated
Name	SEEWebServicesAppPool
Queue Length	1000
Start Mode	AlwaysRunning
<b>CPU</b>	
Limit (percent)	0
Limit Action	NoAction
Limit Interval (minutes)	5
Processor Affinity Enabled	False
Processor Affinity Mask	4294967295
Processor Affinity Mask (64-bit option)	4294967295
<b>Process Model</b>	
Generate Process Model Event Log Entry	
Identity	ApplicationPoolIdentity <span style="border: 1px solid red; padding: 2px;">...</span>
Idle Time-out (minutes)	20
Idle Time-out Action	Terminate
Load User Profile	True
Maximum Worker Processes	1
Ping Enabled	True
Ping Maximum Response Time (seconds)	90
Ping Period (seconds)	30
Shutdown Time Limit (seconds)	90
Startup Time Limit (seconds)	90
<b>Process Orphaning</b>	
Enabled	False
Executable	
Executable Parameters	
<b>Rapid-Fail Protection</b>	
"Service Unavailable" Response Type	HttpLevel
Enabled	True
Failure Interval (minutes)	5
Maximum Failures	5
Shutdown Executable	
Shutdown Executable Parameters	
<b>Recycling</b>	
Disable Overlapped Recycle	False
Disable Recycling for Configuration Changes	False
Generate Recycle Event Log Entry	
Private Memory Limit (KB)	0

**Identity**  
 [identityType, username, password] Configures the application pool to run as built-in account, i.e. Application Pool Identity (recommended), Network Service, Local System, Local Service, or as a specific user identity.

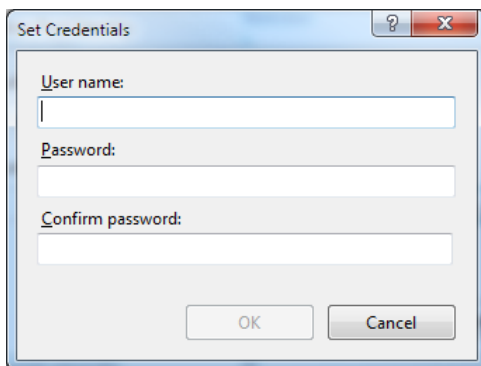
OK Cancel



3. In the **Application Pool Identity** dialog, check **Custom account** and click **Set**.



4. In the **Set Credentials** dialog, enter your user credentials and click **OK**.



**NOTE:** the user has to have read and write permissions for the **SEERoot configuration** and **finished dictation** folders)

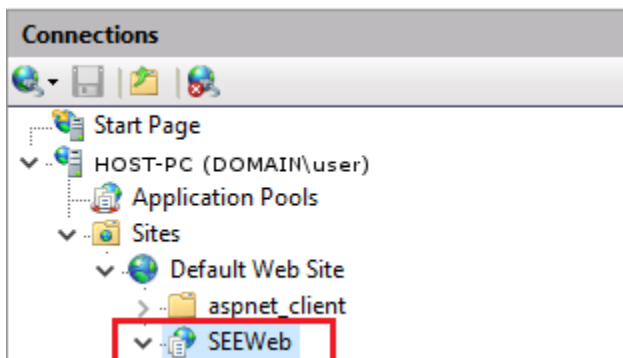
For information on how to create an application pool, see [Optional: How to create a new application pool](#).

### 3.3 How to activate Windows Authentication for the site

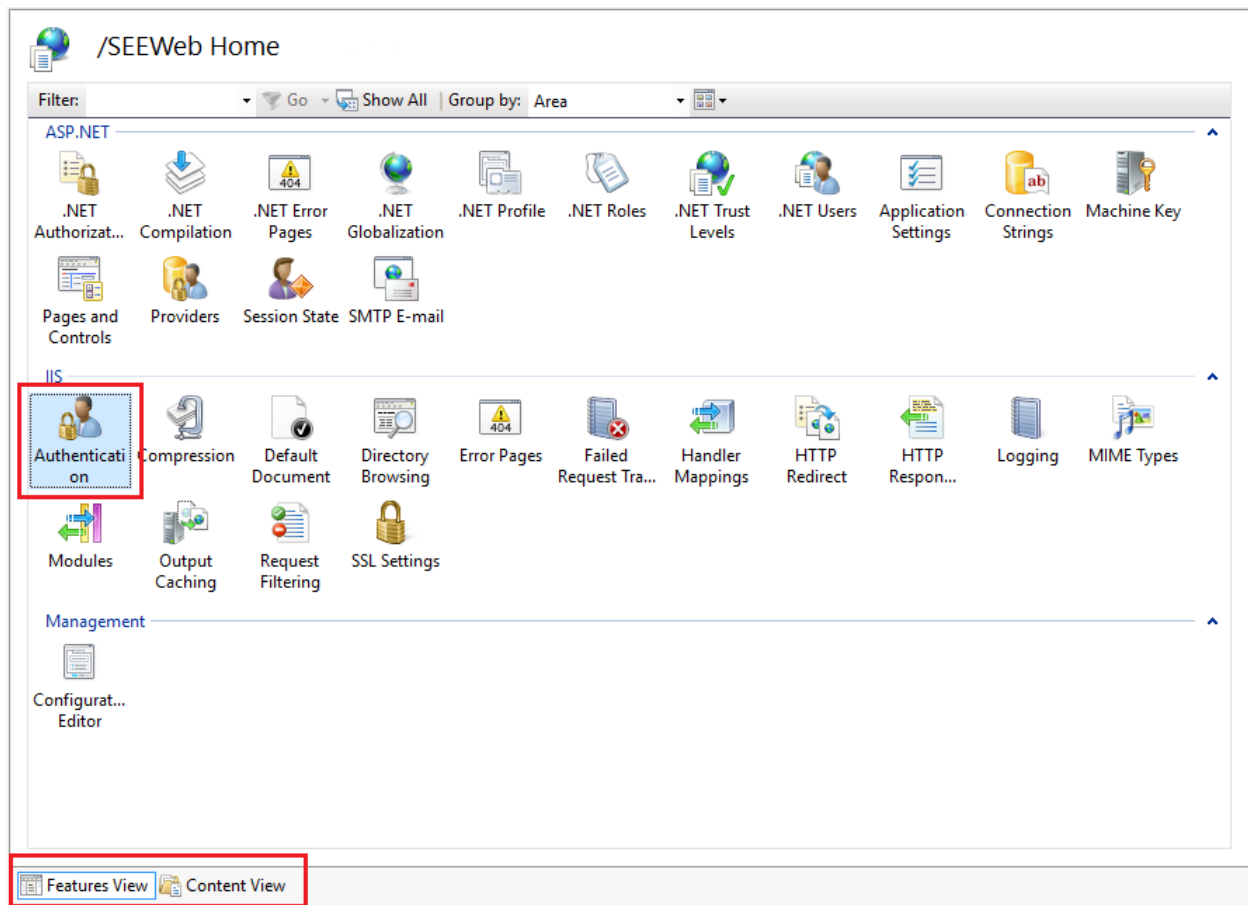
Windows Authentication is mandatory in order for SpeechExec Enterprise web access to work.

To enable Windows Authentication, do the following:

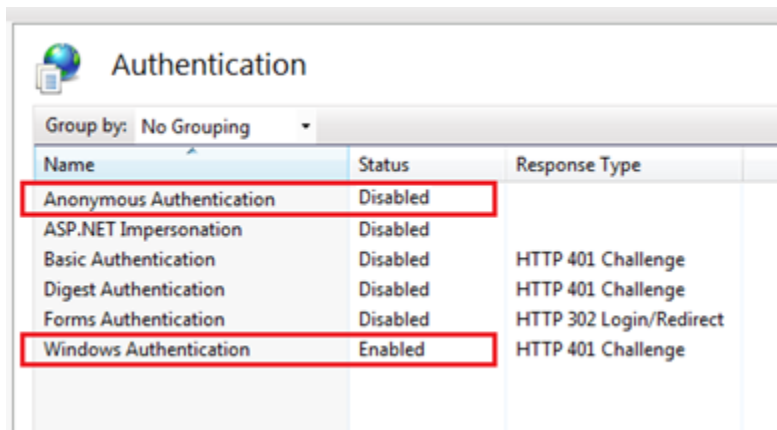
1. In the **Connections** panel on the left, select the **Sites > SEWeb** web service.



2. Select the **Features View** at the bottom of the panel.
3. Double-click **Authentication** in the **IIS** section of the panel.



4. In the **Authentication** panel, do the following:
  - Right-click **Anonymous Authentication** and select **Disabled**.
  - Right-click **Windows Authentication** and select **Enabled**.



### 3.4 Optional: Using HTTPS for SEWeb

In order to use SEWeb with HTTPS, you need to define the following settings:

### 3.4.1 Configuration in IIS

1. In IIS Manager, select the **Default Web Site** (or the one containing SEEWeb) node on the **Connections** panel.
2. On the **Actions** panel (on the right), select **Bindings...**
3. Click **Add**.
4. From the **Type** combo box, select **https**.
5. From the **SSL certificate** combo box, select an SSL certificate.
6. Click **OK**.
7. Restart the host computer to apply the new settings.

## 4 Web.config settings

The following settings are **mandatory** in the Web.config <configuration> <appSettings> section in order to run the SEEWeb site.

**The settings below should only be changed after reading the relevant user guide paragraph, or as a result of a suggestion from our support team.**

Setting	Default value	Description
<b>SEERoot</b>	%ADD_OWN_SEEROOT_FULL_SPEC_HERE%	This setting must be changed after installation to the path of your enterprise root folder.
<b>AutoRefreshTimeInSeconds</b>	120	Automatic refresh interval.
<b>FootControlButtons</b>	4,0,12,14,12,4,14	Foot control button configuration. WARNING: Only change if it is suggested by our support team.
<b>LinkLocalServiceInstaller</b>	Content/setup/PhilipsSpeechLiveLocalServiceSetup.exe	Relative path of SpeechLiveLocalServiceSetup for Windows. WARNING: Only change if it is suggested by our support team.
<b>LinkLocalServiceInstaller4Mac</b>	Content/setup/SpeechLiveLocalService4Mac.dmg	Relative path of SpeechLiveLocalServiceSetup for OSX. WARNING: Only change if it is suggested by our support team.

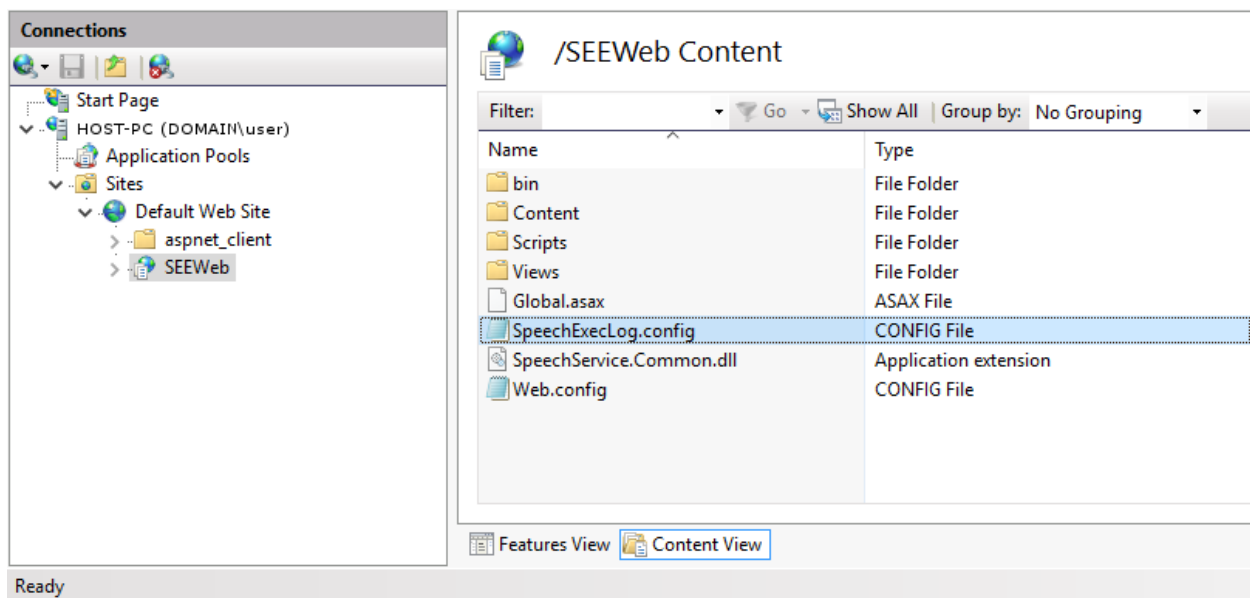
Setting	Default value	Description
<b>URLs.Header.SupportUrl</b>		<p>URL for a custom support page (can be defined by the admin). Accessible using the link in the page header. If not set, defaults to the built-in Support page.</p> <p>Example for this value: <b>mysupportpage.html</b></p> <p>In this example the complete URL would then look as follows: <a href="http://myserver/seeweb/mysupportpage.html">http://myserver/seeweb/mysupportpage.html</a></p> <p>The customized html file has to be located in the program folder of the web service (usually C:\Program Files (x86)\Philips Speech\Enterprise web access\ )</p>
<b>URLs.Header.LoggedOffUrl</b>		<p>URL for a custom LoggedOff page (can be defined by the admin). If not set, defaults to the built-in LoggedOff page.</p> <p>Example for this value: <b>mylogoffpage.html</b></p> <p>In this example the complete URL would then look as follows: <a href="http://myserver/seeweb/mylogoffpage.html">http://myserver/seeweb/mylogoffpage.html</a></p> <p>The customized html file has to be located in the program folder of the web service (usually C:\Program Files (x86)\Philips Speech\Enterprise web access\ )</p>
<b>DictationFolders.AlwaysAllowedFolderPrefixesPipeSeparated</b>		<p>Whitelisted folders for SEWeb. These folders are always allowed to be displayed for any users who has this folder in his/her user configuration.</p>
<b>DictationFolders.DeniedFolderPrefixesPipeSeparated</b>	C:\	<p>Blacklisted folders for SEWeb. These folders are never allowed to be displayed.</p>
<b>Licensing.ServerName</b>	%ADD_OWN_LICENSE_SERVER_NAME_HERE%	<p>This setting must be changed after installation to the name of the Server running Enterprise License server.</p>

Setting	Default value	Description
Licensing.ServerPort	13667	Port that the above-configured Enterprise License server uses.

## 5 Troubleshooting

### 5.1 Logging

The log configuration file is **SpeechExecLog.config**, which is located in the root folder of the **SEWeb** site (visible in **Content View**).



It is the IIS administrator's responsibility to manually edit the SpeechExecLog.config file and specify correct configuration values.

The default path of the log file is:

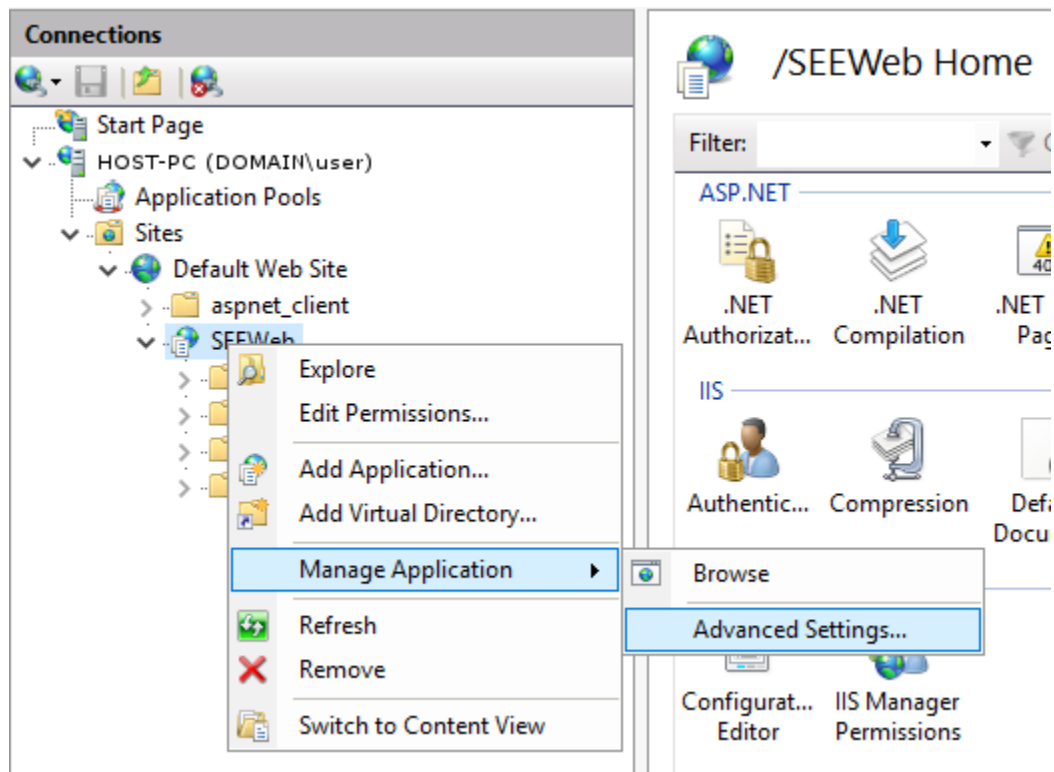
```
<param name="File" value="c:/SEWebAccessLogFolder/SEWebAccess_%TIMESTAMP%.log" />
```

The default maximum size of the log file is:

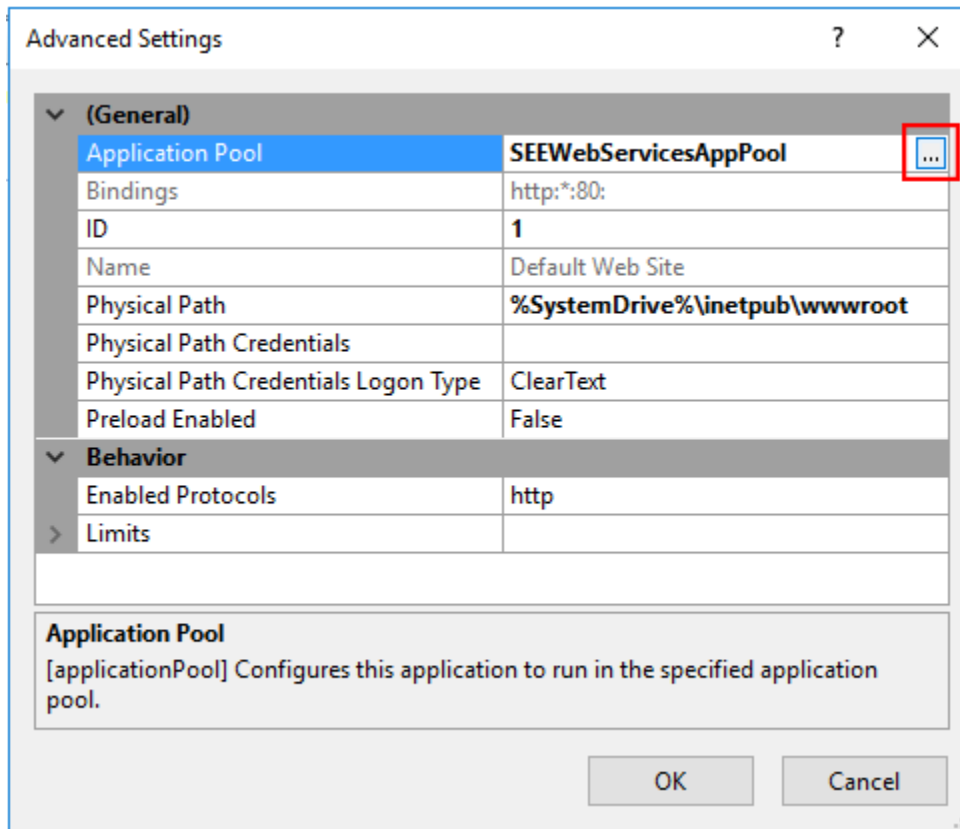
```
<param name="MaximumFileSize" value="1000MB" />
```

## 5.2 How to set up the application pool of the web service

1. In the **Connections** panel on the left, select the **Sites > SEWeb** web service.
2. Right-click the web service, and click **Manage Application > Advanced settings...**



3. In the **Advanced Settings** dialog, select **Application Pool** and click **Browse (...)**.



4. In the **Select Application Pool** dialog, select **SEESWebServicesAppPool**, and click **OK**.

### 5.3 How to create a new application pool

Application pools allow isolating one web application from another, even if they are running on the same server. This way, if there is an error in one app, it will not take down other applications.

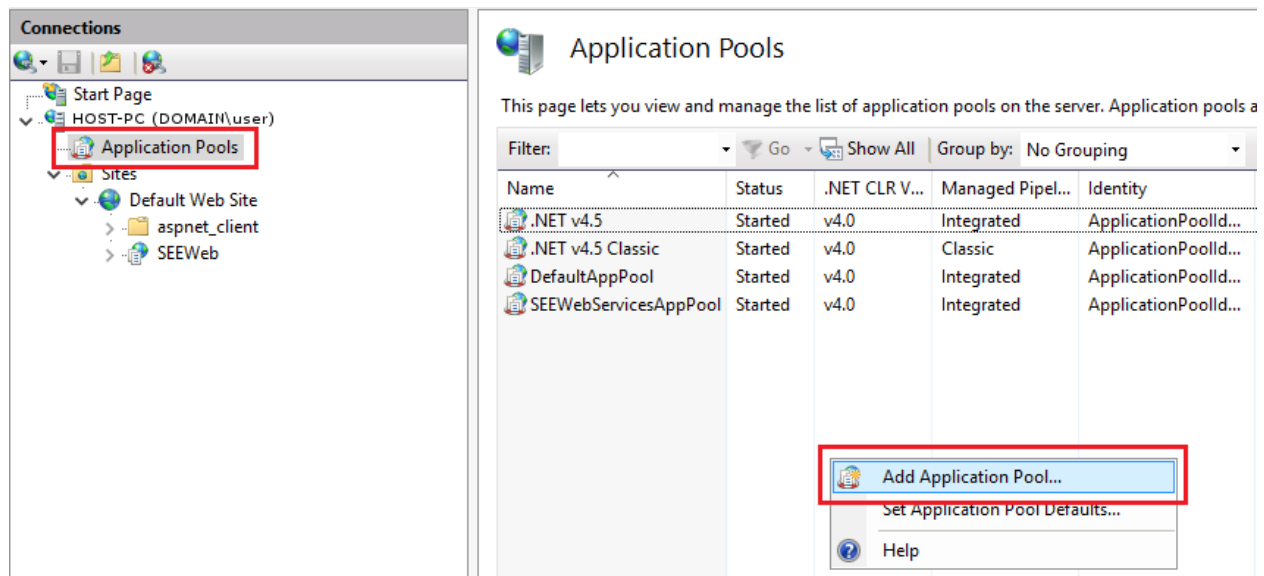
Additionally, applications pools allow specifying different levels of security (for example, file access security) for different apps.

The installer of the web service will create a new application pool by default and assign the web service to the pool.

If a new application pool must be created, follow the instructions below:

1. Open the Internet Information Services (IIS) Manager.

2. Select **Application Pools** from the **Connections** panel on the left. Right-click the **Application Pools** panel and select **Add Application Pool...**



3. Enter a name for your new application pool, such as **SEESWebServicesAppPool**.
4. In the **.NET CLR version** list, select :
  - .NET CLR Version v4.0.30319
5. Make sure the **Start application pool immediately** checkbox is selected.
6. Click **OK** to create and start the application pool.

