

# Administrator's guide for SpeechExec Enterprise web access

## Table of Contents

Change history .....	3
1 System requirements .....	4
1.1 Hardware requirements .....	4
1.2 Software requirements .....	4
2 How to define the location of SEERoot and license server in the IIS web.config file .....	5
2.1 During installation .....	5
2.2 Modifying the SEERoot and license server manually after installation .....	5
3 Configuring the web service .....	7
3.1 How to set up automatic startup for the web service .....	7
3.2 Proper application pool settings .....	9
3.2.1 Change user identity of application pool .....	9
3.2.2 Special application pool settings .....	11
3.3 How to activate Windows Authentication for the site .....	11
3.4 Audio recording .....	13
3.5 Using HTTPS for SEWeb .....	13
3.5.1 Configuration in IIS .....	13
4 Web.config settings .....	13
5 Using web access .....	15
5.1 Login .....	15
6 Troubleshooting .....	15
6.1 Logging .....	15
6.2 How to set up the application pool of the web service .....	16
6.3 How to create a new application pool .....	17

## Change history

Application version	Document version	Description
SEE 9.0	2024. 06. 11	SEE 9.0 release 32-bit app. pool setting must be disabled
SEE 8.8	8.8.0	SEE 8.8 release
SEE 8.7	8.7.0	SEE 8.7 release
SEE 8.1	8.1	
SEE 8.0	8.0	Added Windows Server 2022 as supported operating system
SEE 7.1	7.1	Updated Microsoft .NET Framework requirements Notes about audio recording and HTTPS
SEE 7.0	7.0	Updated OS requirements
SEE 6.0	1.0	Initial document

## 1 System requirements

### 1.1 Hardware requirements

SpeechExec Enterprise web access has the following hardware requirements:

- **Processor:** Intel® Core™ i5 or equivalent AMD processor
- **RAM:** 4 GB
- **Free hard disk space:**
  - 4 GB hard disk space (8 GB recommended)
  - Microsoft .NET 4.8 Framework requires an additional 4.5 GB of free disk space.

### 1.2 Software requirements

For the supported operating system, we recommend that you apply the latest Service Pack available before installing SpeechExec Enterprise web access.

- Microsoft Windows Server 2016
- Microsoft Windows Server 2019
- Microsoft Windows Server 2022
- Internet Information Services (IIS) 7 or later, with the following features:
  - ASP.NET 4.x
  - Windows authentication
- Microsoft .NET Framework 4.8
  - Make sure that IIS is turned on before installing .NET Framework to have a properly installed ASP.NET

## **Role and Feature requirements**

(the example below uses Windows Server 2016 – Add Roles and Features Wizard):

### Roles tab:

- Web Server (IIS) [IIS 7 or later]
  - Common HTTP Features
    - HTTP Errors
    - Static content
    - HTTP Redirection
  - Security
    - Windows Authentication
  - Application Development
    - .NET Extensibility 4.x
    - ASP .NET 4.x

Although the installer of SpeechExec Enterprise web access installs the web service into IIS, it is the task of the administrator to properly set up IIS.

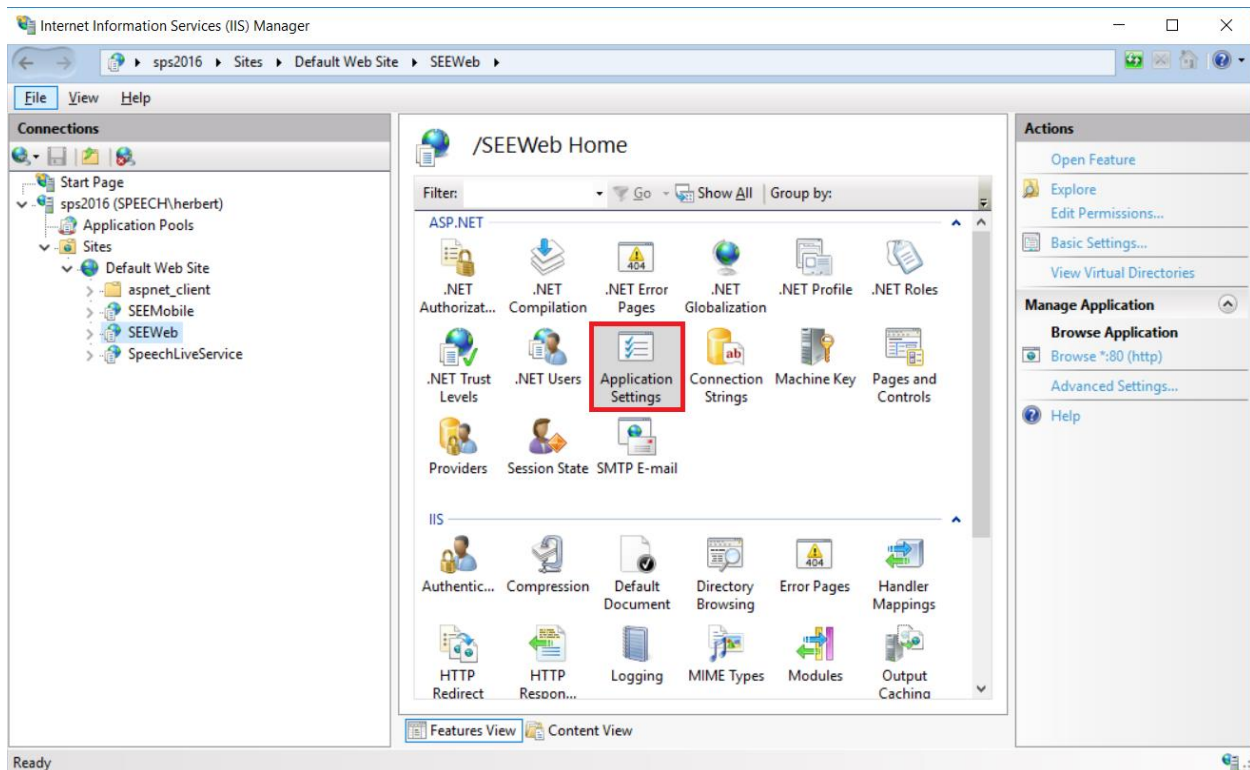
## 2 How to define the location of SEERoot and license server in the IIS web.config file

### 2.1 During installation

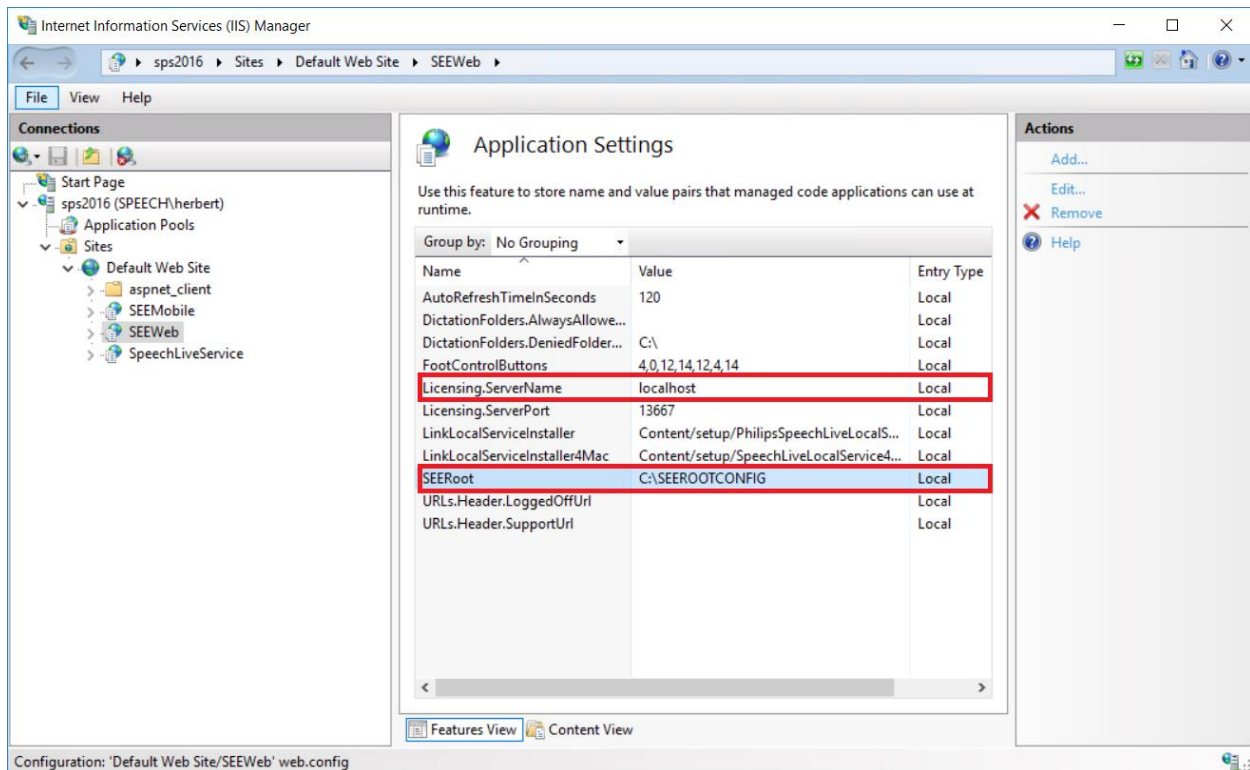
During installation, the SEERoot configuration folder and license server address must be defined and cannot be modified by the installer later, only manual modification is supported.

### 2.2 Modifying the SEERoot and license server manually after installation

If you want to change the path of the SEERoot configuration folder and license server address after the installation, open the IIS Manager, select the **SEERoot** node and double click **Application Settings**:



Double click “SEERoot” or “Licensing.ServerName” to change the according values:



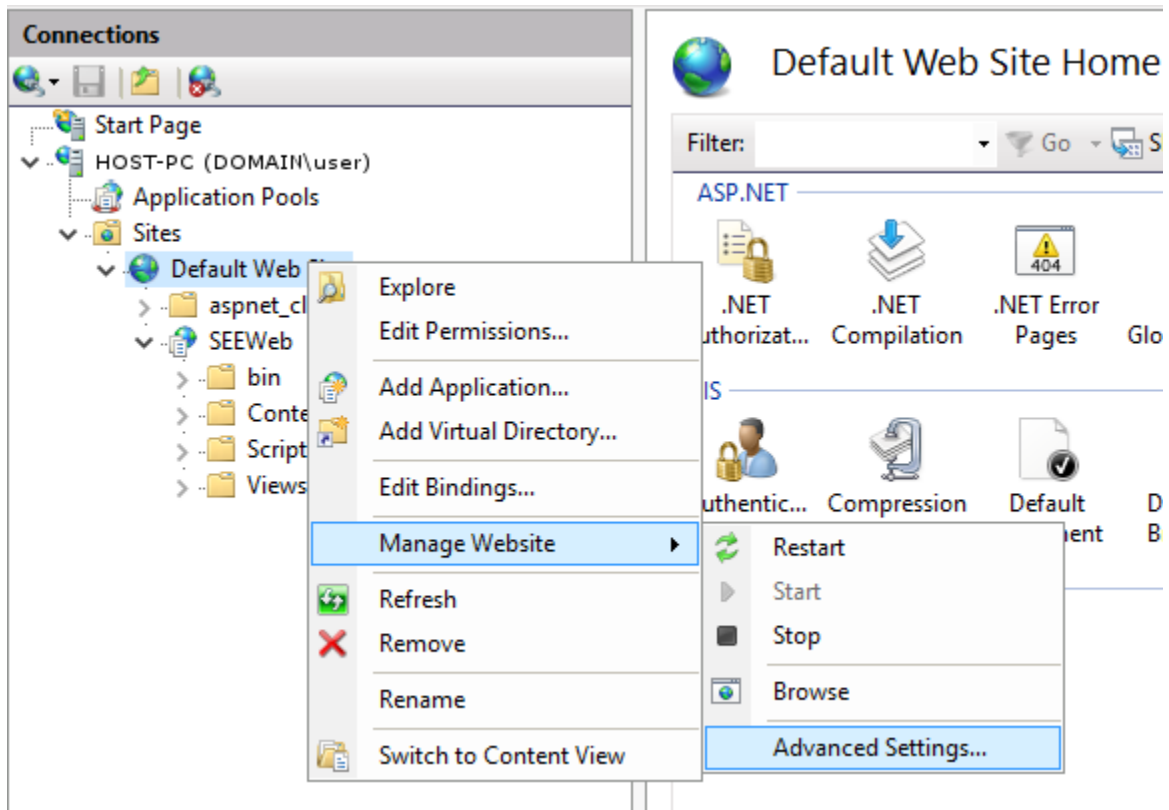
### 3 Configuring the web service

#### 3.1 How to set up automatic startup for the web service

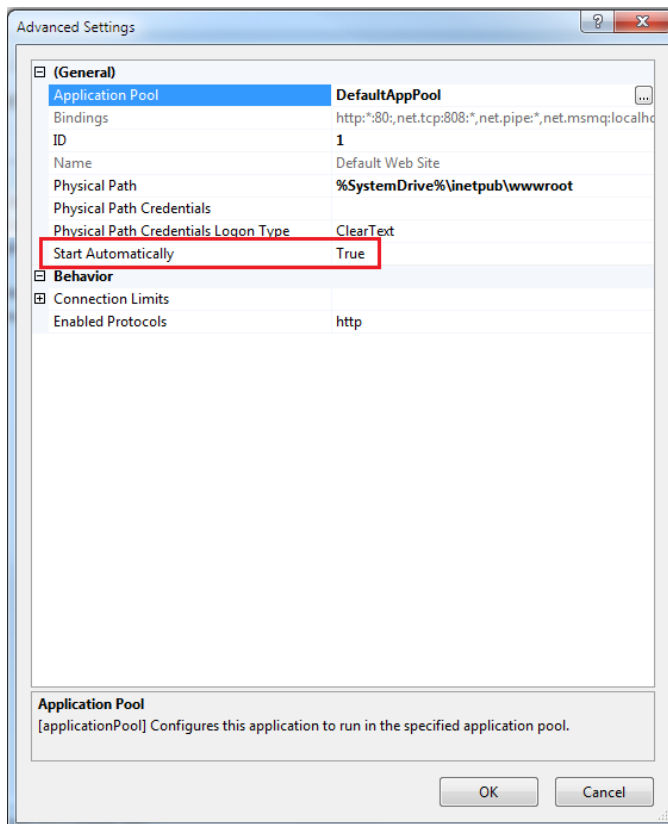
To set up the web service to start automatically, do the following:

##### **Older IIS versions (earlier than version 8):**

1. Right-click **Default Web Site** and select **Manage Web Site > Advanced settings...**



2. Set Start Automatically to True.





**Newer IIS versions (8 or later):**

1. In IIS Manager, click on the computer name on the **Connection** pane.
2. Switch to **Features View** if the view is not active.
3. Double-click **Configuration Editor** in the **Management** section of the **Features View**.
4. Click the down-arrow next to the **Section** field, expand system.applicationHost, and then click **applicationPools**.
5. Click **(Collection)** and then click **Browse (...)** next to the field that shows the count.
6. In the **Collection Editor**, select the application pool for which you want to configure the startMode attribute.
7. In the **Properties** window at the bottom, set the following values:
  - autoStart attribute to **true**
  - startMode attribute to **AlwaysRunning**

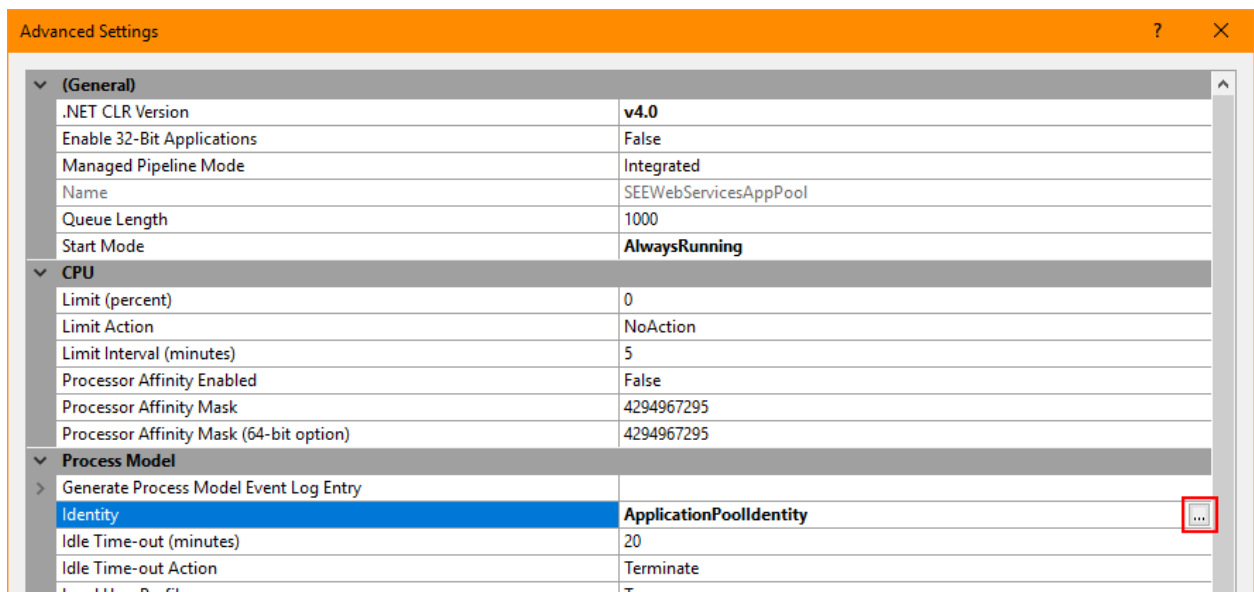
## 3.2 Proper application pool settings

### 3.2.1 Change user identity of application pool

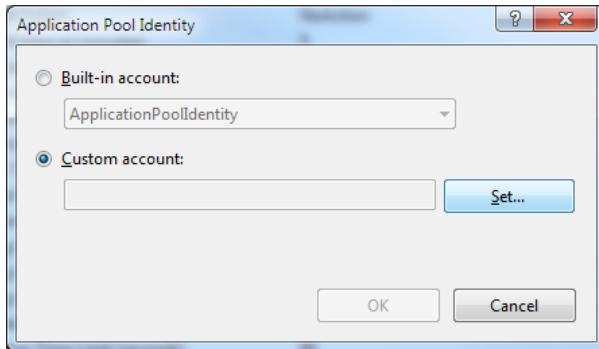
A user with appropriate rights to access “SEERoot” and the all of the configured dictation folders for users is required to be used as an AppPoolIdentity user.

To change the user identity for the new application pool, follow the instruction below:

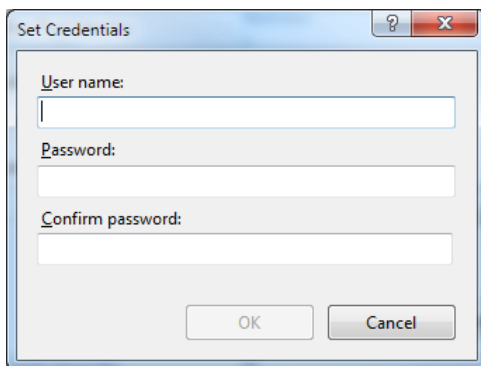
1. On the **Application Pools** panel in IIS, right-click the newly created **SEEServicesAppPool** and select **Advanced Settings...**
2. In the **Advanced Settings** dialog, select **Identity** and click **Browse (...)**.



3. In the **Application Pool Identity** dialog, check **Custom account** and click **Set**.



4. In the **Set Credentials** dialog, enter your user credentials and click **OK**.



**NOTE:** the user must have read and write permissions for the **SEERoot configuration** and **finished dictation** folders)

For information on how to create an application pool, see [6.3 How to create a new application pool](#).

### 3.2.2 Special application pool settings

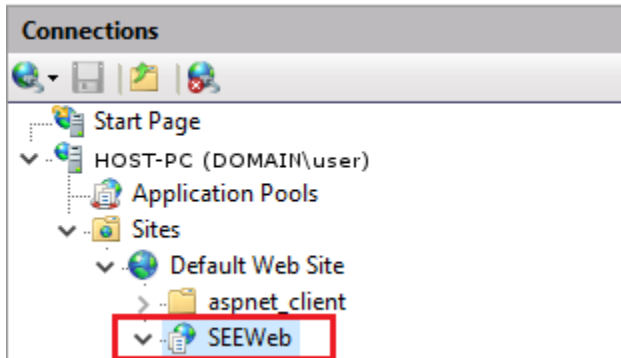
- Make sure that the **Enable 32-bit applications** setting of the application pool is:
  - o False

### 3.3 How to activate Windows Authentication for the site

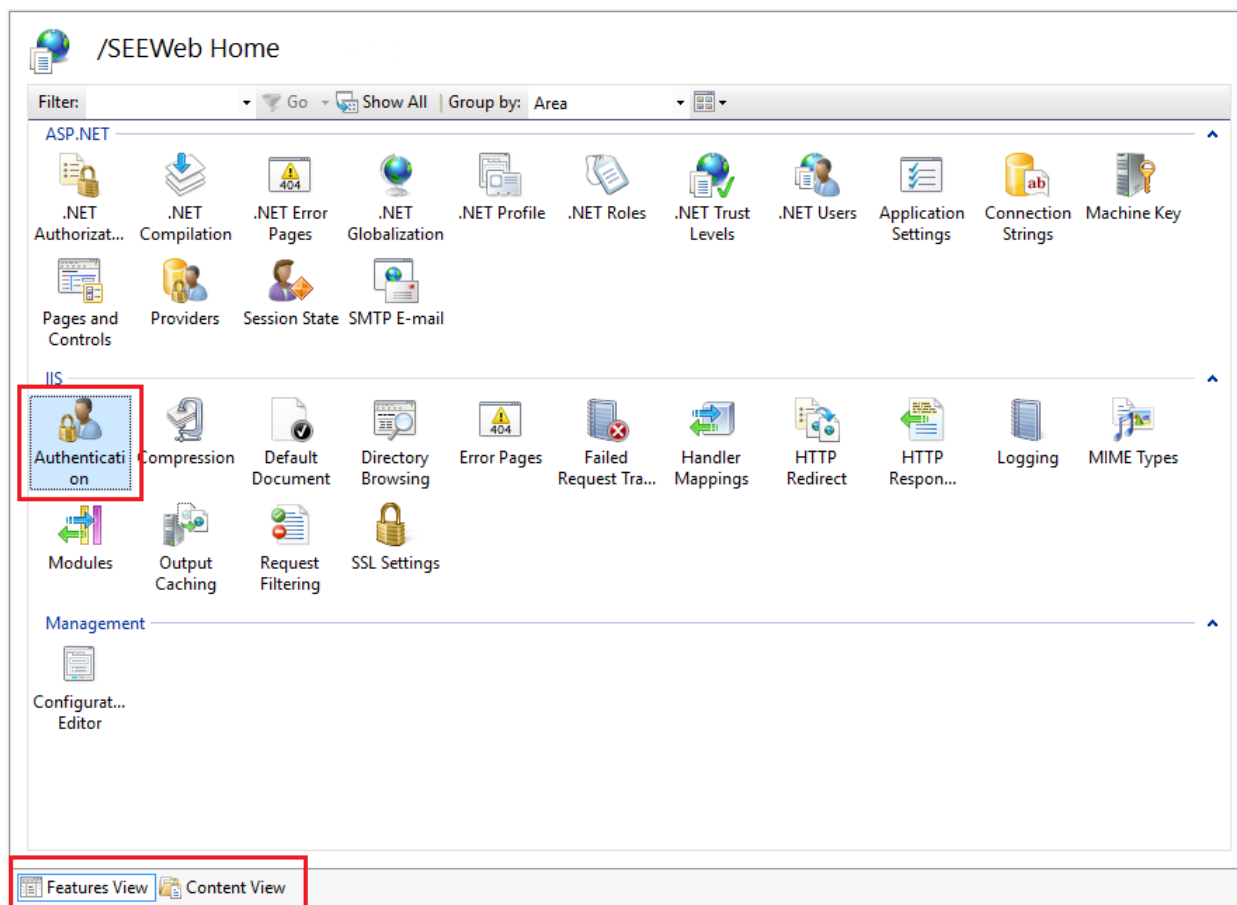
Windows Authentication is mandatory for SpeechExec Enterprise web access to work.

To enable Windows Authentication, do the following:

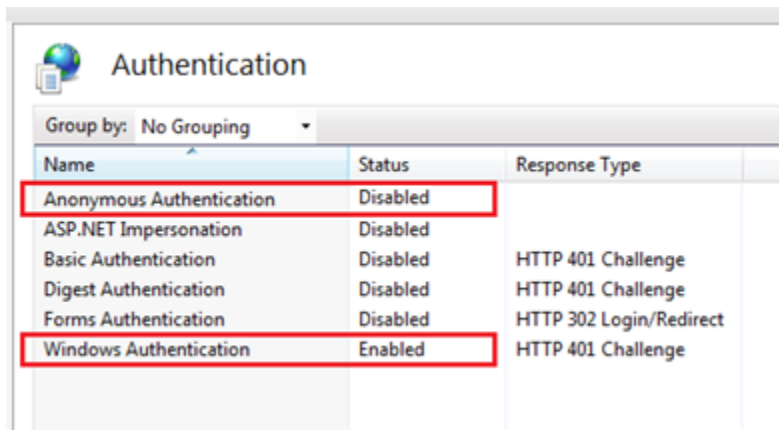
1. In the **Connections** panel on the left, select the **Sites > SEWeb** web service.



2. Select the **Features View** at the bottom of the panel.
3. Double-click **Authentication** in the **IIS** section of the panel.



4. In the **Authentication** panel, do the following:
  - Right-click **Anonymous Authentication** and select **Disabled**.
  - Right-click **Windows Authentication** and select **Enabled**.



### 3.4 Audio recording

'Web access' provides audio recording capabilities for users logged on as authors. Please note that it is *mandatory* to access SEWeb over HTTPS and have a *proper SSL certificate* to have problem-free recording in case the end-users want to use the audio recorder capabilities (see 3.5 below).

### 3.5 Using HTTPS for SEWeb

**Important:** it is *mandatory* to access 'Web access' over HTTPS in case the end-users want to use the audio recorder capabilities.

To use SEWeb with HTTPS, you need to define the following settings:

#### 3.5.1 Configuration in IIS

1. In IIS Manager, select the **Default Web Site** (or the one containing SEWeb) node on the **Connections** panel.
2. On the **Actions** panel (on the right), select **Bindings...**
3. Click **Add**.
4. From the **Type** combo box, select **https**.
5. From the **SSL certificate** combo box, select an SSL certificate.
6. Click **OK**.
7. Restart the host computer to apply the new settings.

## 4 Web.config settings

The following settings are **mandatory** in the Web.config <configuration> <appSettings> section in order to run the SEWeb site.

**The settings below should only be changed after reading the relevant user guide paragraph, or as a result of a suggestion from our support team.**

Setting	Default value	Description
<b>SEERoot</b>	%ADD_OWN_SEEROOT_FULL_SPEC_HERE%	This setting must be changed after installation to the path of your enterprise root folder.
<b>AutoRefreshTimeInSeconds</b>	120	Automatic refresh interval.
<b>FootControlButtons</b>	4,0,12,14,12,4,14	Foot control button configuration. WARNING: Only change if it is suggested by our support team.
<b>LinkLocalServiceInstaller</b>	Content/setup/PhilipsSpeechLiveLocalServiceSetup.exe	Relative path of SpeechLiveLocalServiceSetup for Windows. WARNING: Only change if it is suggested by our support team.

Setting	Default value	Description
<b>LinkLocalServiceInstaller4Mac</b>	Content/setup/SpeechLiveLocalService4Mac.dmg	Relative path of SpeechLiveLocalServiceSetup for OSX. WARNING: Only change if it is suggested by our support team.
<b>URLs.Header.SupportUrl</b>		<p>URL for a custom support page (can be defined by the admin). Accessible using the link in the page header. If not set, defaults to the built-in Support page.</p> <p>Example for this value: <b>mysupportpage.html</b></p> <p>In this example the complete URL would then look as follows: <a href="http://myserver/seeweb/mysupportpage.html">http://myserver/seeweb/mysupportpage.html</a> The customized html file has to be located in the program folder of the web service (usually C:\Program Files (x86)\Philips Speech\Enterprise web access\ )</p>
<b>URLs.Header.LoggedOffUrl</b>		<p>URL for a custom LoggedOff page (can be defined by the admin). If not set, defaults to the built-in LoggedOff page.</p> <p>Example for this value: <b>mylogoffpage.html</b></p> <p>In this example the complete URL would then look as follows: <a href="http://myserver/seeweb/mylogoffpage.html">http://myserver/seeweb/mylogoffpage.html</a> The customized html file has to be located in the program folder of the web service (usually C:\Program Files (x86)\Philips Speech\Enterprise web access\ )</p>
<b>DictationFolders.AlwaysAllowedFolderPrefixesPipeSeparated</b>		Whitelisted folders for SEWeb. These folders are always allowed to be displayed for any users who has this folder in his/her user configuration.

Setting	Default value	Description
<b>DictationFolders.DeniedFolderPrefixesPipeSeparated</b>	C:\	Blacklisted folders for SEEWeb. These folders are never allowed to be displayed.
<b>Licensing.ServerName</b>	%ADD_OWN_LICENSE_SERVER_NAME_HERE%	This setting must be changed after installation to the name of the Server running Enterprise License server.
<b>Licensing.ServerPort</b>	13667	Port that the above-configured Enterprise License server uses.

## 5 Using web access

### 5.1 Login

To log into web access as an *author*, the end-user needs to visit the following link in a supported browser:

<http://companyserver/SEEWeb/login/author>

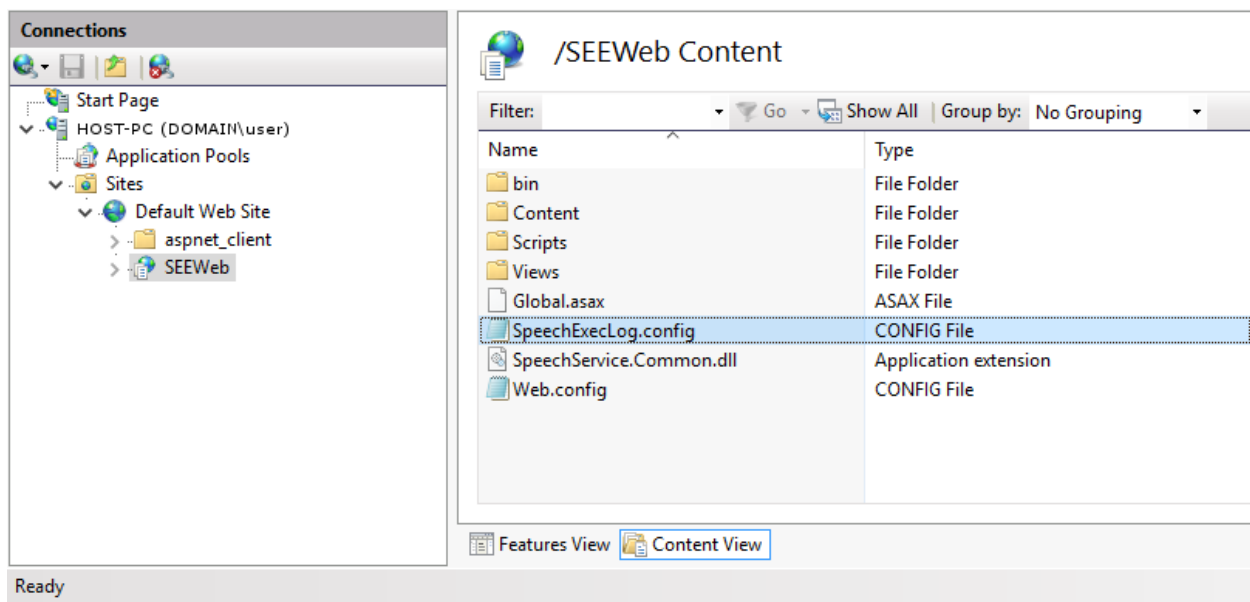
To log in as a *typist*, visit:

<http://companyserver/SEEWeb/login/typist>

## 6 Troubleshooting

### 6.1 Logging

The log configuration file is **SpeechExecLog.config**, which is in the root folder of the **SEEWeb** site (visible in **Content View**).



It is the IIS administrator's responsibility to manually edit the SpeechExecLog.config file and specify correct configuration values.

The default path of the log file is:

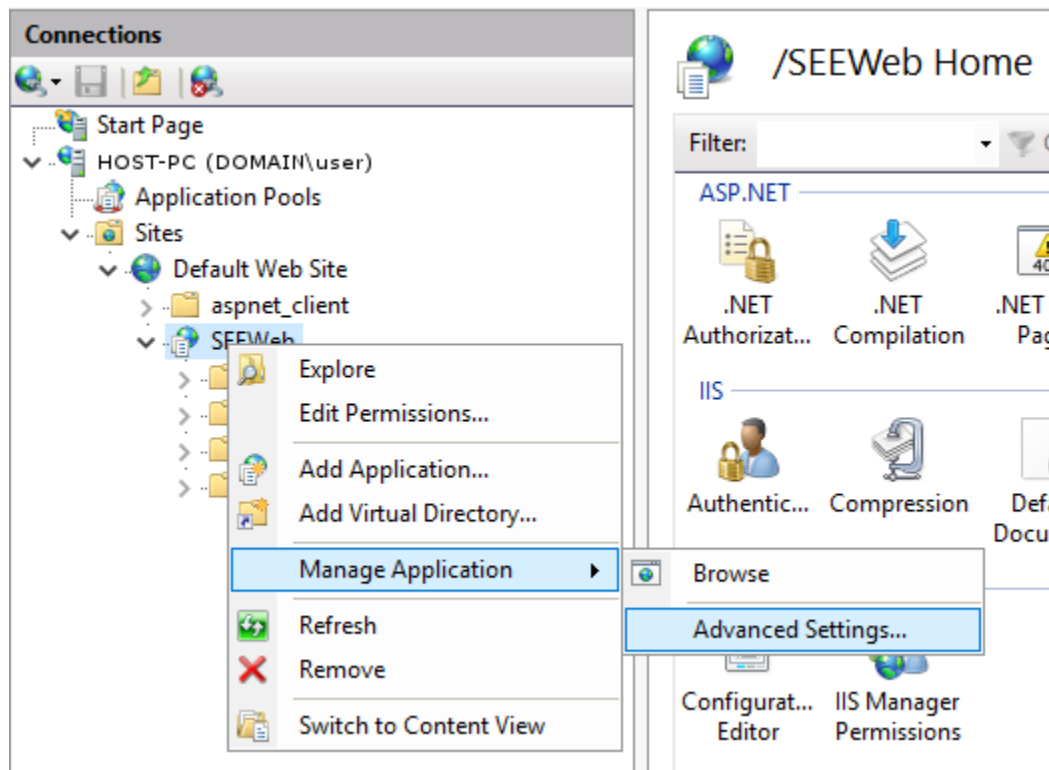
```
<param name="File" value="c:/SEWebAccessLogFolder/SEWebAccess_%TIMESTAMP%.log" />
```

The default maximum size of the log file is:

```
<param name="MaximumFileSize" value="1000MB" />
```

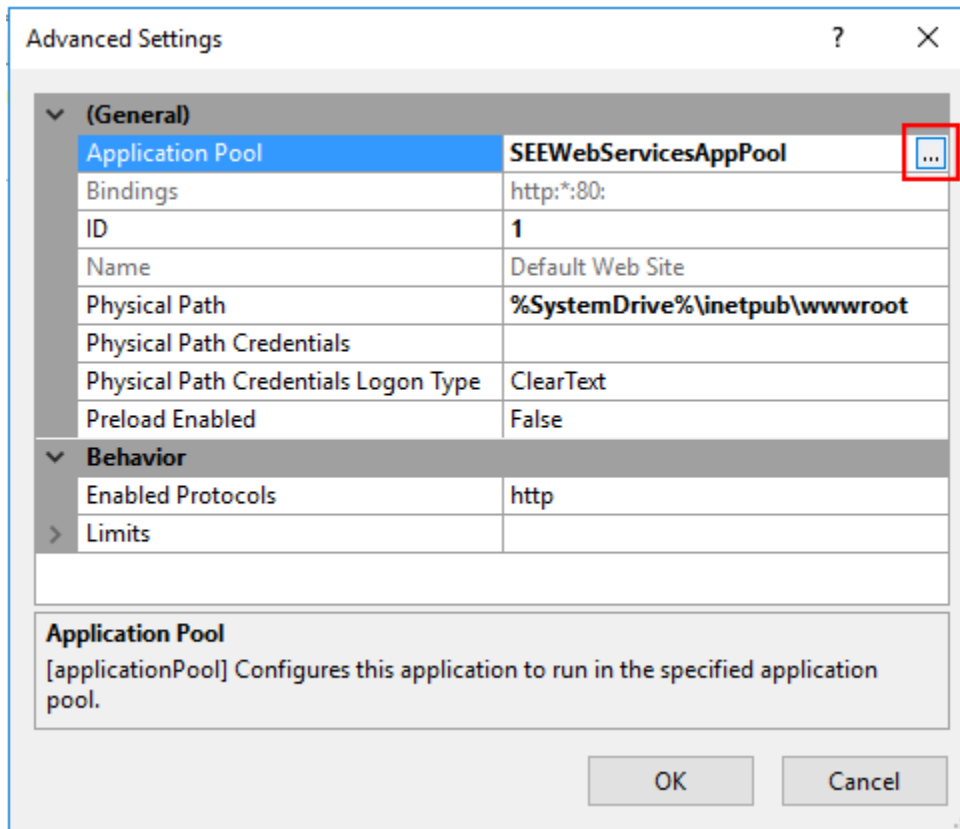
## 6.2 How to set up the application pool of the web service

1. In the **Connections** panel on the left, select the **Sites > SEWeb** web service.
2. Right-click the web service, and click **Manage Application > Advanced settings...**





3. In the **Advanced Settings** dialog, select **Application Pool** and click **Browse (...)**.



4. In the **Select Application Pool** dialog, select **SEESWebServicesAppPool**, and click **OK**.

### 6.3 How to create a new application pool

Application pools allow isolating one web application from another, even if they are running on the same server. This way, if there is an error in one app, it will not take down other applications.

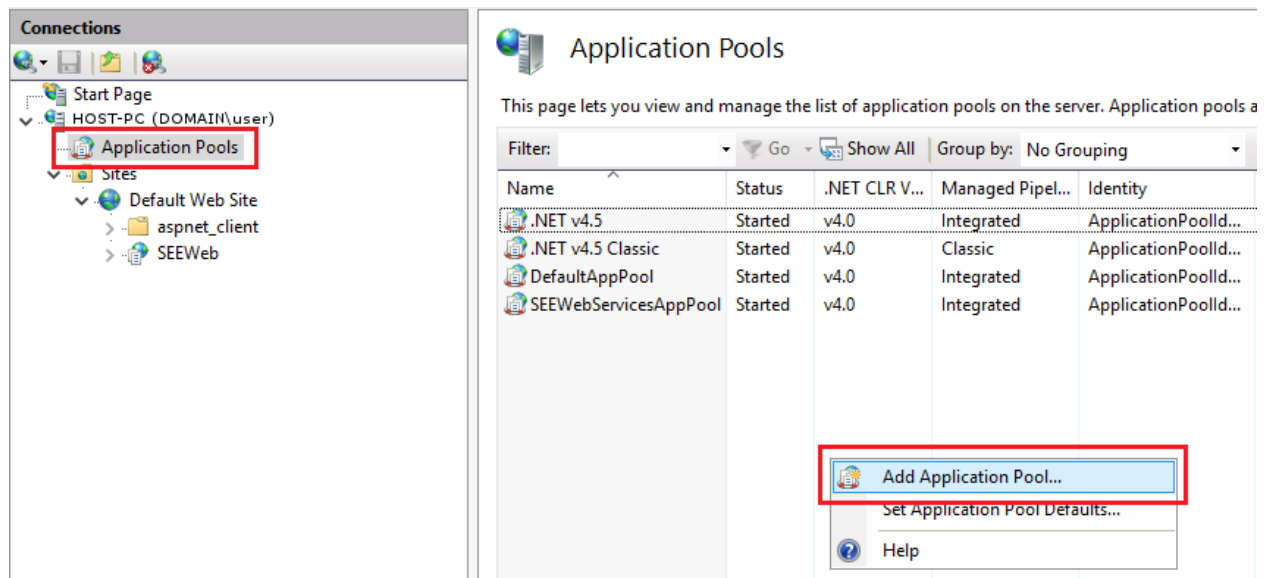
Additionally, applications pools allow specifying different levels of security (for example, file access security) for different apps.

The installer of the web service will create a new application pool by default and assign the web service to the pool.

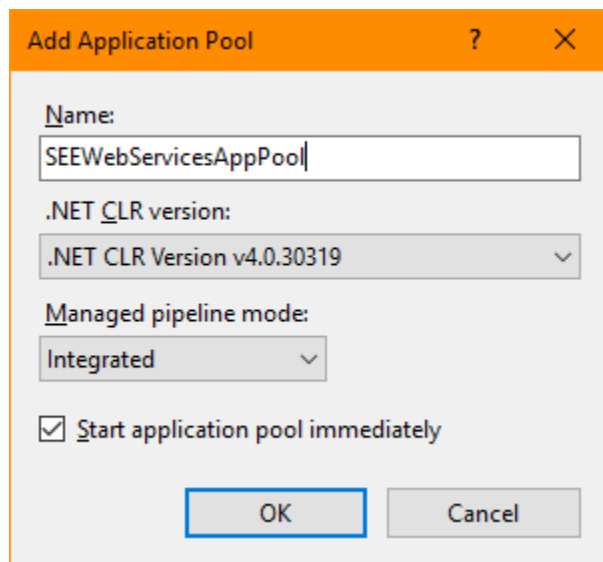
If a new application pool must be created, follow the instructions below:

2. Open the Internet Information Services (IIS) Manager.

3. Select **Application Pools** from the **Connections** panel on the left. Right-click the **Application Pools** panel and select **Add Application Pool...**



4. Enter a name for your new application pool, such as **SEEWebServicesAppPool**.
5. In the **.NET CLR version** list, select :
  - .NET CLR Version v4.0.30319
6. Make sure the **Start application pool immediately** checkbox is selected.
7. Click **OK** to create and start the application pool.



8. Select the newly created application pool and click on **Edit Application Pool > Advanced settings...**
9. Make sure that the **Enable 32-bit applications** setting is:
  - False

