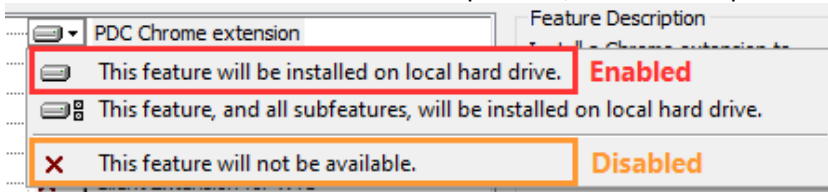


PHILIPS SPEECHLIVE WEB PLAYER HOW TO RESTORE FOOT CONTROL OPERATION

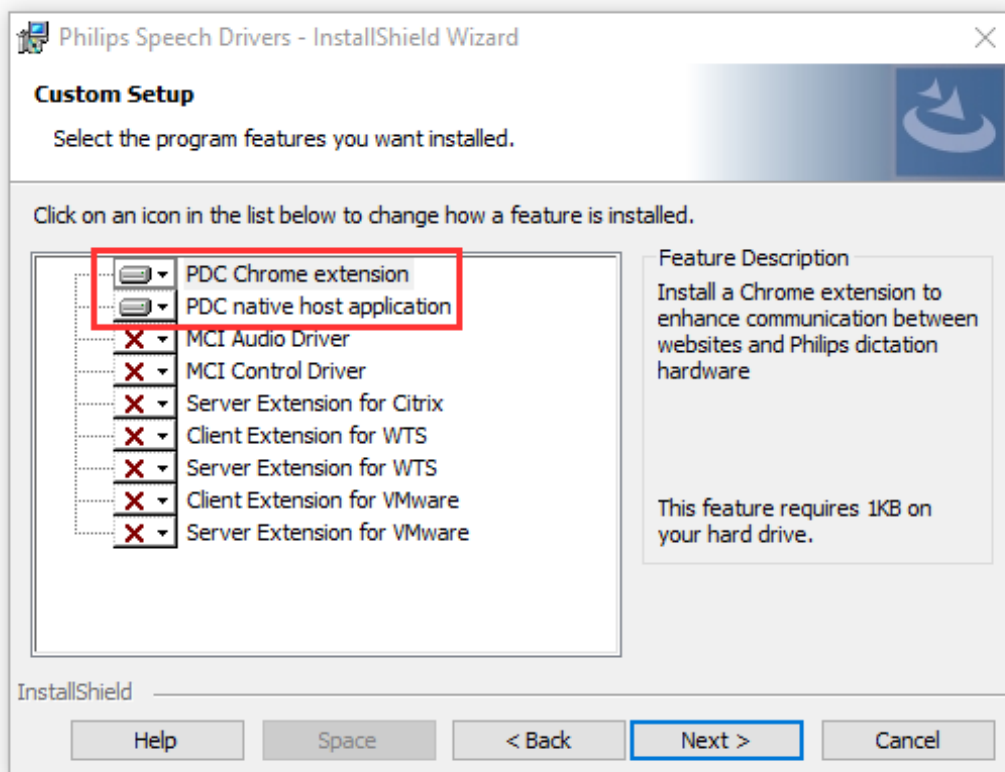
Recent versions of Google Chrome may restrict the operation of the foot control when using SpeechLive's web player, especially when another window (such as Microsoft Word or your EMR/DMS) is in fullscreen and on top of the Chrome window.

This is easily rectified by following the below steps:

1. Sign out of SpeechLive and close all Chrome windows
2. Download the Philips Device Connector driver package from [THIS LINK](#)
3. Run (double-click) **PhilipsSpeechDriversSetup.exe** (administrative permissions are required for this step)
4. When asked to select installation components, click the drop-down menu for each item to enable or disable it:

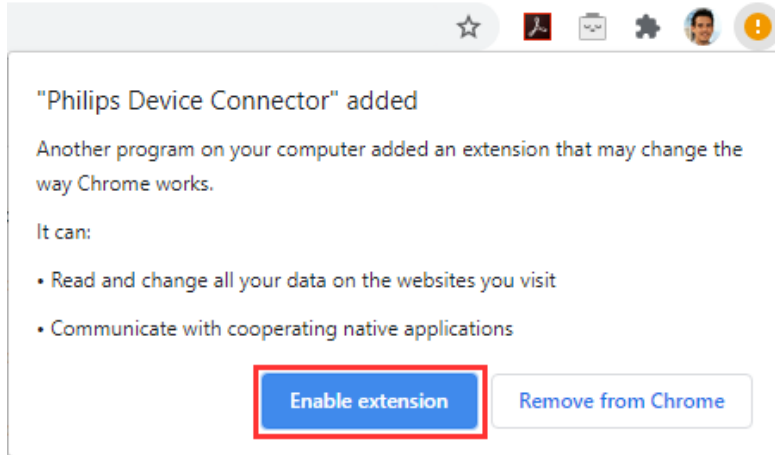


5. Enable both components beginning with "PDC" and disable all other components, as shown below:



6. Follow the prompts to complete the installation
7. Launch Chrome

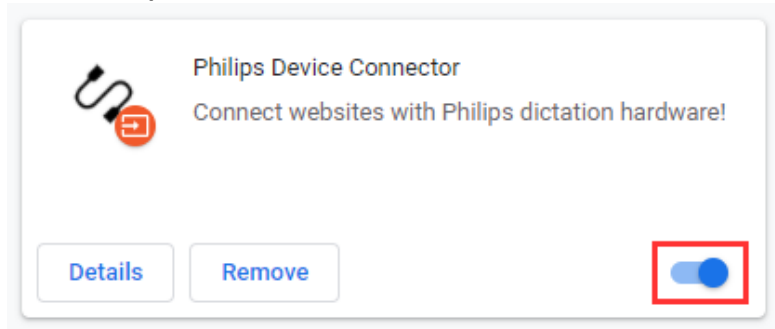
8. You should be presented with the following notice about a new extension (see **NOTE 1** below if the prompt does not appear):



9. Click **Enable extension**
10. Your foot control should now operate normally

NOTE 1: If the new extension notice does not appear automatically, do the following:

1. Click **> Settings**
2. Click **Extensions**
3. Enable **Philips Device Connector**:



NOTE 2: These instructions apply to SpeechLive web player running on the local PC. If your Chrome browser is running in a Remote Desktop or Citrix environment, please contact us for further assistance.

© VoiceX Communications 2020