

SPEECHEXEC ENTERPRISE

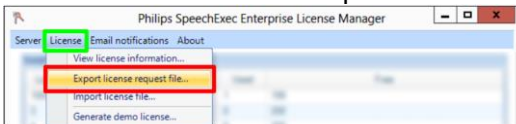
HOW TO EXPORT A LICENSE REQUEST

HOW TO IMPORT A NEW LICENSE FILE

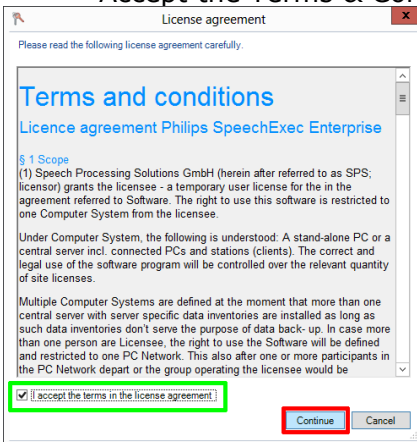
For a permanent SpeechExec Enterprise License a license request file must be exported from the SpeechExec License Manager, which is to be installed on the server. This file must then be sent to VoiceX, along with the signed License Agreement.

TO EXPORT A LICENSE REQUEST FILE

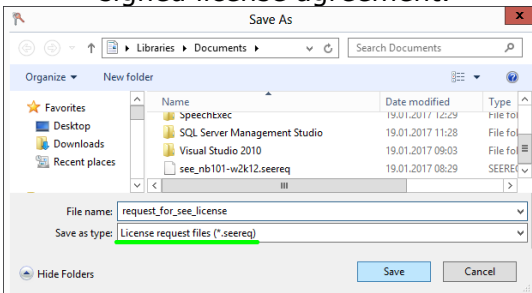
- Open the SpeechExec License Manager
- Click LICENSE>Export license request file...



- Accept the Terms & Conditions



- Save the License Request File (*.seereq) & send this to your VoiceX representative along with the signed license agreement.

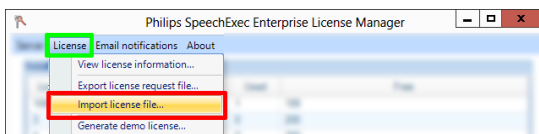


Your new or amended SpeechExec Enterprise License will be created by Philips (Vienna). This will usually take up to 48 (business) hours.

Once received you will need to IMPORT the new .seelic file in to your SpeechExec License Manager.

TO IMPORT A LICENSE

- Open License Manager and click LICENSE>Import license file...



- Browse to your new License file (.seelic) and import
- You can see all the installed and available licenses.

License Id	License Name	Quantity	Used	Free
1000	Universal	30	0	30
100	EnterpriseManag	2	0	2
101	WebDirector	2	0	2
102	WorkflowManage	2	0	2
103	StatisticsCAL	2	0	2
200	SDK	2	0	2