

DRAGON MEDICAL ONE (TRIAL ACCOUNT)

HOW TO USE POWERMIC MOBILE

1. Install DMO by following the installation guide provided in your **Welcome Kit** email
2. Launch DMO and sign in
3. Select **Nuance PowerMic Mobile** from the Microphone list:



4. The **DragonBar** will open with an **ORANGE** microphone icon:



5. Install the **Nuance PowerMic Mobile** app from the **App Store (iOS)** or **Play Store (Android)**:



6. DO NOT launch the app at this stage; if it launches after installation, simply close it
7. Open your mobile's **Camera** app and scan one of the following QR codes (if the QR code does not work, skip to **Step 13**):

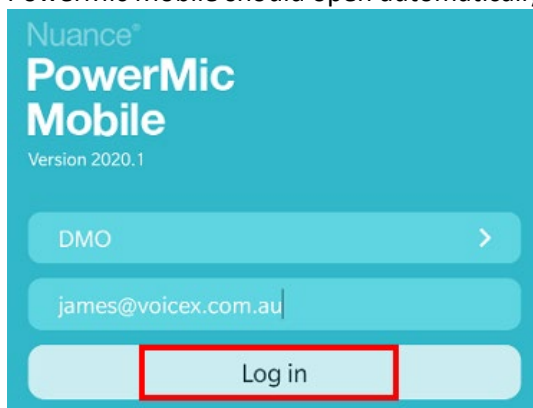
iOS



ANDROID

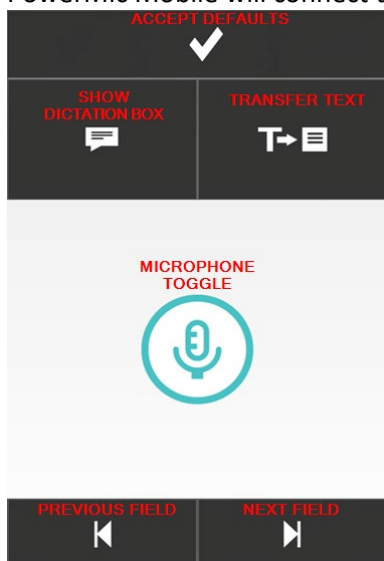


8. Tap the link that appears and select the option to **open using the PowerMic Mobile** app
9. PowerMic Mobile should open automatically; type your **User ID** (usually your email) and tap **Log in**:



***NOTE for iOS users:** In some cases, two profiles may be created (Profile 1 and Profile 2). If the automatically selected profile does not connect, try the other profile.

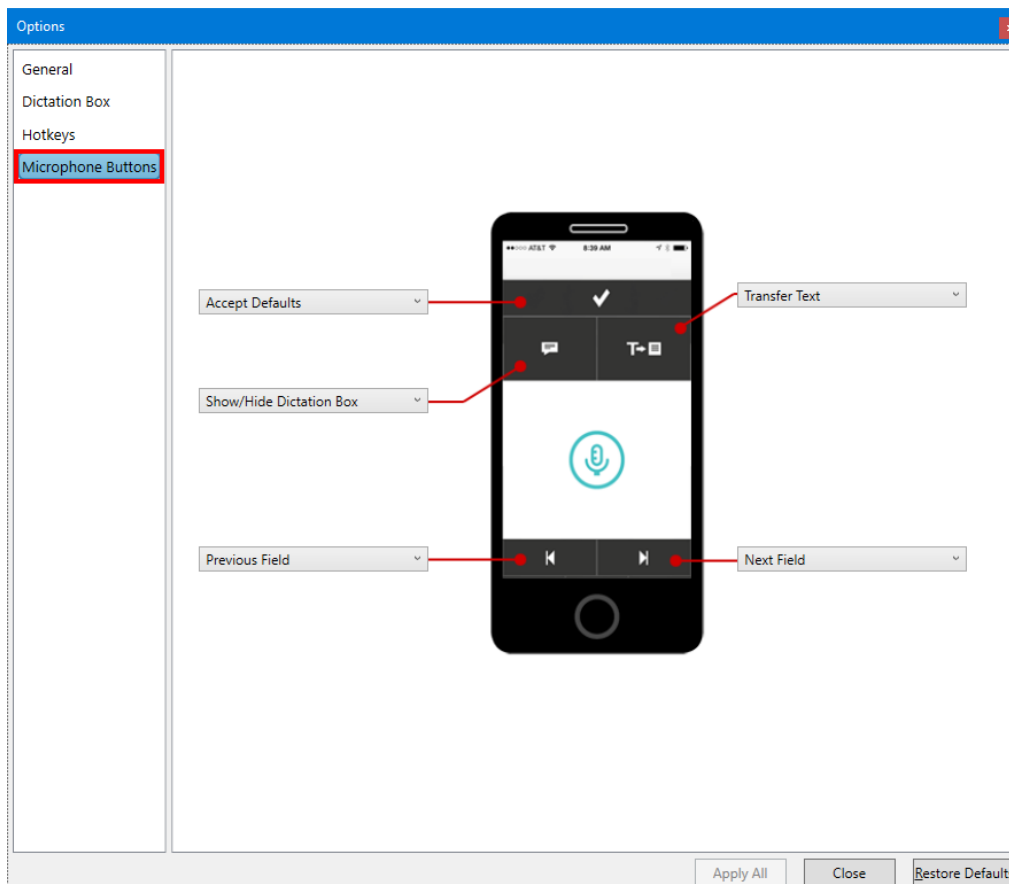
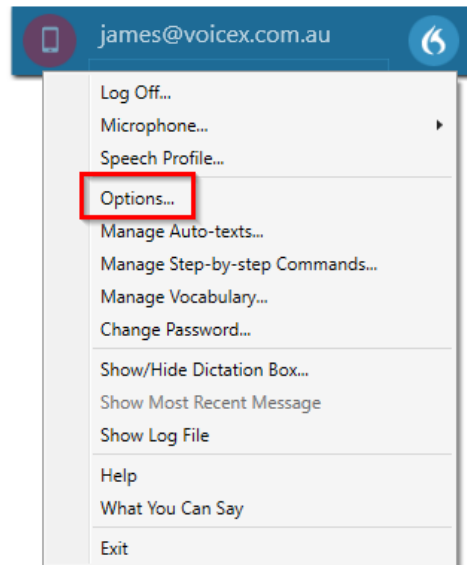
10. PowerMic Mobile will connect to your DMO session and present the following control screen:



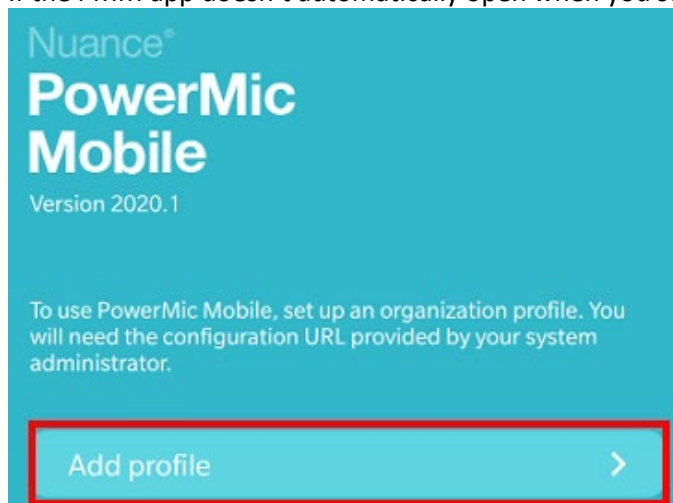
11. The microphone icon on the DragonBar will change **RED** to indicate a successful connection:



12. From this point, the microphone is controlled from the PMM app. Button assignment can be configured by clicking the **DragonBar menu > Options... > Hotkeys**:



13. If the PMM app doesn't automatically open when you scan the QR code, launch it and click **Add profile**:



14. Copy and paste the appropriate URL below into the **PROFILE URL** box and enter any name (eg. DMO) into the **PROFILE NAME** box:

iOS:

[dmic://config_?NmsToken=NTUxNDk4QTQtNzI3Ri00MkI3LUFEM0ItQzQ5NzQ1NjZFQzRC&NmsBaseUrl=nms-au.nuancehdp.com](http://config_?NmsToken=NTUxNDk4QTQtNzI3Ri00MkI3LUFEM0ItQzQ5NzQ1NjZFQzRC&NmsBaseUrl=nms-au.nuancehdp.com)

Android:

http://config_?NmsToken=NTUxNDk4QTQtNzI3Ri00MkI3LUFEM0ItQzQ5NzQ1NjZFQzRC&NmsBaseUrl=nms-au.nuancehdp.com

15. Press **SAVE** to return to the home screen and continue from **Step 9**

© VoiceX Communications 2021

info@voicex.com.au

NSW: By Appointment Only
Level 13, 135 King Street
SYDNEY NSW 2000

Australia Wide : 1300 551 778
New Zealand : 09 887 0396

VIC: Head Office
Level 2, Suite 2, 424 St Kilda Road
MELBOURNE VIC 3004

www.voicex.com.au

WA: By Appointment Only
Level 3, 267 St Georges Terrace
PERTH WA 6000